

Section VI

Reports

- Archivist
- Lutheran Church Extension Fund (LCEF)
- Summary of Actions Taken by the Board of Directors of the Northern Illinois District during the Past Triennium
- Task Force on the Stewardship of the District Report
- Lois Stewart, Mission Facilitator for Schools, Serving Commissioned Workers
- Rev. Kris Whitby, Assistant to the President - Mission and Ministry
- Ann Ciaccio, Director, Communications
- LeeAnn Acosta, Treasurer
- Congregational Giving
- Rev. John Prohl, Assistant to the President
- Rev. Dr. Thomas Johnson, Ethnic Ministry Development
- Dr. Debbie Arfsten, Church Worker Care Team

The archives at the LCMS Northern Illinois District headquarters contain a history file for each congregation in the District. Congregations and organizations are encouraged to send two copies of historical material such as anniversary booklets, pastor installation programs, etc. for the District archives in Hillside. One copy will be forwarded to the Concordia Historical Institute (CHI) in St. Louis for permanent preservation. Congregations can also check the resources on the CHI website (<https://concordiahistoricalinstitute.org/>) for publications covering anniversary celebrations, record retention/preservation and other topics.



Congregational records from disbanded congregations should be forwarded to the Concordia Historical Institute (CHI) for permanent preservation. Since the last convention the congregations of Risen Savior (Byron), Celebration Ministries (Park Forest), Resurrection (River Forest),

Trinity (Chicago - No. Meade), and St. John (Northbrook) have disbanded. Available records from these congregations have been sent to either CHI or a nearby congregation. The missing records from Bethlehem (Chicago) which disbanded in 2015, are being stored at St. John (Lansing). There was a devastating fire at St. Paul (Beecher) in September 2021. The safe containing their records was found in the fire debris, and the congregation is working with several locksmiths to open the safe and check the condition of the contents. We pray that they will be in good condition; but this is a reminder that important records such as baptismal, confirmation, marriage, and death records, along with meeting minutes, should be kept in a fire and waterproof safe. And if a congregation has disbanded, all records should be sent to the Concordia Historical Institute or the District office (for forwarding) to ensure preservation.

All congregations are encouraged to consider the preservation of their record books. This typically involves digitizing. This will provide easy access to the information without the wear and tear on the original paper documents (but it is not considered preservation). Electronic records and documents (such as WORD, EXCEL, Shepherd's Staff files, etc.) should be saved in the Portable Document Format (PDF) and backed up regularly with one copy kept at an offsite or cloud-based location. Any congregation with questions concerning digitization is encouraged to contact the archivist.

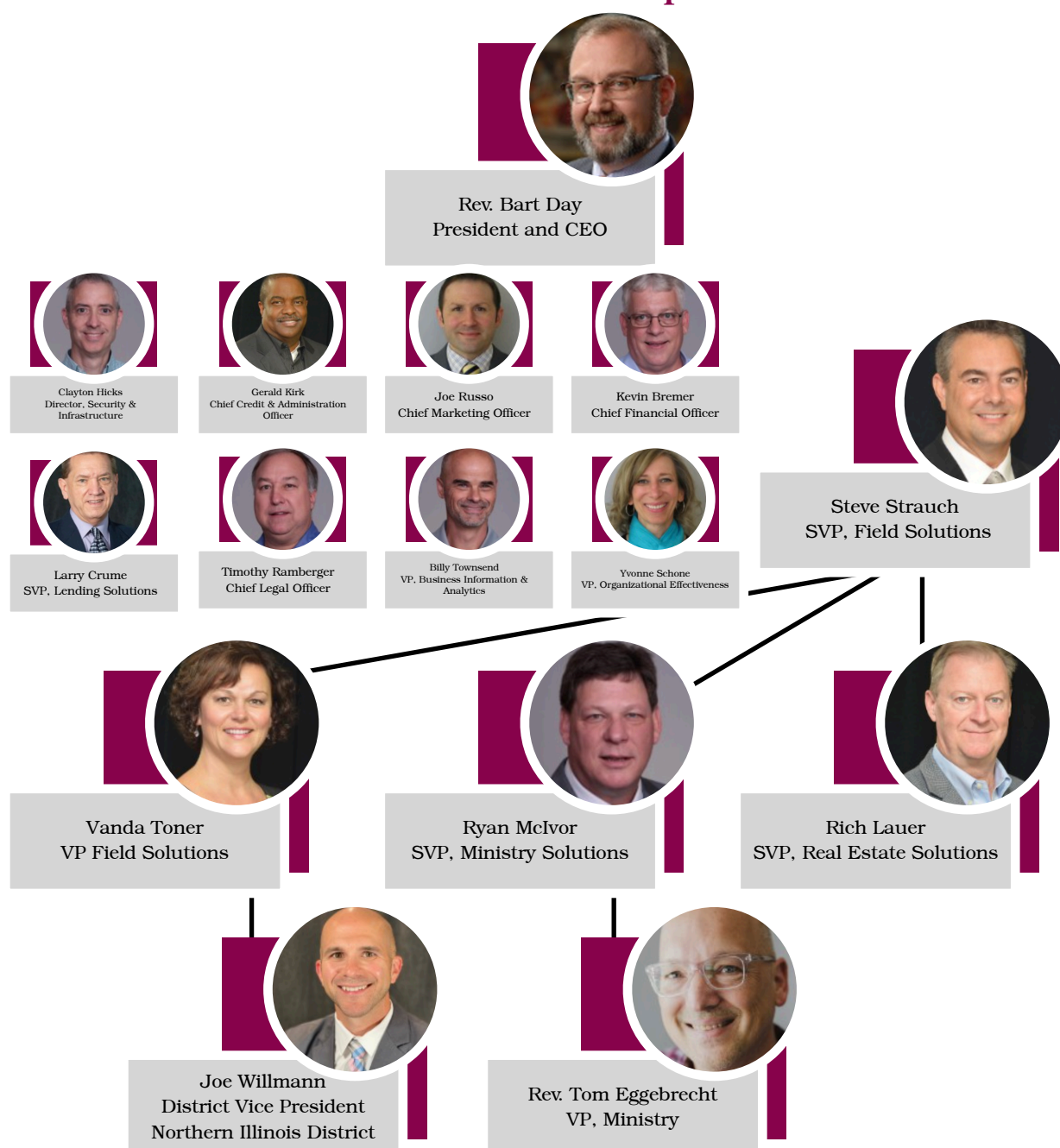
The NID office has scanned all issues of *The Northern Light* newspaper (1986-2017). The predecessor publication, the *Northern Illinois District Messenger* (1925-1986) will be scanned as funds become available. My thanks to Pastor James Huenink (Concordia-Berwyn) for translating the book *Geschichte der Gründung und Ausbreitung der zur Synode von Missouri, Ohio und Andern Staaten* (*History of the Founding and Growth of The Synod of Missouri, Ohio and Other States*). This book was originally written in German and provides an insight into the early work of the LCMS (primarily in the Chicago area) prior to 1897. This translation is available on the internet.



**Joe Willmann, District Vice President
 Northern Illinois District**

Greetings in Christ! It is my pleasure to serve alongside you here in the NID. A lot has changed at LCEF since the district last met in convention. You have a new District Vice President and the organization has gone through a major restructuring. While these things have changed, the mission of LCEF has not. We are here to serve you. God's peace be with you as we strive to see the world as Christ would have us see it.

LCEF Leadership





Lutheran Church Extension Fund

> where investments build ministry

MISSION

The mission of Lutheran Church Extension Fund is to support The Lutheran Church—Missouri Synod by ensuring that financial resources and related services are available now and in the future.

VISION

Growing ministry opportunities.

VALUES

In Christ . . .

- Be. Faithful
- Pursue. Excellence and Innovation
- Inspire. Belief through Partnerships
- Endure. Balance Resources and Risk
- Learn. Continually

TARGET OUTCOMES

1. STRATEGIC PARTNERSHIPS

LCEF grows the impact of ministry through existing and new partnerships by the alignment and the leveraging of LCEF's strengths in organizational and business leadership to better the stewardship of God's resources.

2. FINANCIAL STRENGTH

LCEF provides ministry support and financial services around the world by aggressively growing assets and the impact of ministry.

Three-Year Objectives

Continuous Improvement

The seed of continuous improvement was planted in fiscal year 2021 when employees were challenged to set individual goals focused on process improvement.

Increase Investment in Core Technology

We are examining and evaluating each of the systems currently in place to service our customers' financial needs.

Transforming Identity and Position

By transforming and repositioning LCEF's identity, we aim to enhance market perceptions in ways that make an offering more appealing to a larger audience segment across the LCMS.

Develop Key Partnerships

LCEF will develop key partnerships to accomplish our strategic growth goals over the coming years.

Access to Greater Financial Resources

At its core, LCEF is a lending institution. The Extension Fund model requires us to pay for capital at rates higher than banks. As LCEF looks to the future, it is important to develop a diversified funding plan.

By the Numbers

1978

The year LCEF was incorporated.

31

The number of districts where LCEF operates.

\$2.1

Billion in total assets.

60,000

Number of faithful investors.

**2022 Convention Report:
Summary of Actions Taken by the Board of Directors of the
Northern Illinois District during the Past Triennium**

Unless otherwise noted, all meetings were held in person at the district office.

December 18, 2017

- Housing allowances for district staff for 2018 were approved.
- The board appointed the Administrative Services Committee to carry out a review of board-designated net assets. In the previous meeting the board had mandated such a review, but had omitted to state who was to carry out the review.
- The board approved the audit engagement letter from Mueller and Company.
- The board approved a copyright license agreement with Jackie Bussert.
- Lilydale Baptist Church, which was intending to purchase the Park Forest property owned by the district, had asked for more time to look at potential repairs that might be needed. The district granted the request.
- The Administrative Services Committee was asked to look at Zion Lutheran Church on 109th Street in Chicago and determine what to do with the property. The district had received the property in 2010 in lieu of foreclosing on the property for a substantial loan it had given to the congregation that the congregation had not been able to repay.

January 16, 2018

- The FY2018 budget (for February 1, 2018 to January 31, 2019) was approved.
- The sum of \$4,503.06 was left over from money collected for tornado relief in the past. The board redirected the money to Lutheran Church Charities for disaster relief.
- The 2015 district convention had declined an overture to consider the feasibility of reinstating the mission and ministry board. Instead the convention had asked the board of directors to consider the motion. The board adopted a motion declining to act on the overture, since the current model of New Starts...New Believers works well.

March 19, 2018

- LeeAnn Acosta was elected treasurer.
- The amounts available for distribution from the endowment funds were set.

June 18, 2018

- There was an orientation for the new triennium.
- The Rev. John Prohl was called to serve as assistant to the president.
- A communications policy was adopted.
- The FY2017 audit was approved.
- Endowment grants were approved.

September 10, 2018

- The Administrative Services Committee was appointed for the triennium.



**2022 Convention Report:
Summary of Actions Taken by the Board of Directors of the
Northern Illinois District during the Past Triennium**

- A Taskforce on the Stewardship of District Resources was appointed, as mandated by a resolution of the 2018 district convention.

October 29, 2018

- Matthew Gutzler was appointed to fill the vacancy on the board of directors for commissioned minister from the North Region.
- The Administrative Services Committee had spent several months examining board-designated funds that were sitting dormant because they were no longer needed for their original purpose. Since the funds had been earmarked by the board, not donors, the board was free to repurpose them. The board adopted the following recommendations of the committee:
 - \$6,763.69 from the unexpended plant fund and \$25,412.03 from the undesignated bequest fund were earmarked to support urban ministry.
 - The following were designated as surplus: \$167,215.98 from the board designated operation research fund; \$61,548.96 from the board designated Byron building fund; \$107,887.44 from the unexpected plant/advance site fund; \$26,786.48 from the Brockschmidt/NID designate fund; \$6,246.29 from the church growth for parochial schools fund; \$150.00 from the board designated fund for victim assistance; and \$5,643.01 from the NID media co-op.
- \$74,954.00 from an Ablaze grant that had been awarded, but unused by the recipient congregation was redirected to the Wellness and Witness portions of the Word, Wellness, and Witness emphasis.

December 17, 2018

- The housing allowance was set for staff for 2019.
- The board approved the audit engagement letter with Mueller and Company.
- The board set the health premium contributions for the following year for employees, their spouses, and their dependents.
- The board adopted a flow chart and step procedures outlining under what conditions the district will receive property from defunct congregations.

January 14, 2019

- The budget for FY2019 (for February 1, 2019 to January 31, 2020) was adopted.

March 18, 2019

- Lois Stewart was called as Executive for Education.
- The amounts available for distribution from the endowment funds were set. This included some money from a previous grant that had not been able to be used by a congregation to which it had been awarded.

June 17, 2019

- Endowment grants were awarded.
- The board agreed to support LINC Chicago at the rate of \$5,000 for FY2020 and, if it met with continued board support, at the rate of \$10,000 for each of the following two fiscal years.



**2022 Convention Report:
Summary of Actions Taken by the Board of Directors of the
Northern Illinois District during the Past Triennium**

- The board approved the audit for FY2018.
- The board issued a six-month call to the Rev. Keith Haney as district mission executive.
- The board adopted a motion to perfect the title on the property of Zion Lutheran Church on 109th Street in Chicago in order to be able to sell the property.
- The board adopted a motion to have the Administrative Services Committee look into selling the ten-acre property the board had in Poplar Grove. Along with the property of the aforementioned Zion Lutheran Church in Chicago, this was the last property the district owned, except for the district office.

August 23, 2019

- A vote was taken electronically to authorize the sale of the property of Zion Lutheran Church on 109th Street in Chicago for no less than \$440,000.

September 9, 2019

- Andrea Pitkus was elected to fill the vacancy on the Board of Regents for Concordia University Chicago created by the departure of Alicia Dietrich.
- The Rev. Keith Haney was granted a peaceful release. The board authorized a search for candidates to serve as Assistant to the President for Mission and Ministry.
- The board set the health premium contributions for the following year for employees, their spouses, and their dependents.

November 4, 2019

- The board adopted a new payroll schedule: semimonthly rather than biweekly.
- The Taskforce on the Stewardship of District Resources had requested that the district get an appraisal of the district office building and a cost-benefit analysis of selling it and leasing space elsewhere as well as of continuing to stay in the current building. The board authorized their request.
- The Rev. Kris Whitby was called to serve as Assistant to the President for Mission and Ministry.

December 16, 2019

- The board set housing allowances for staff for 2020.
- The board gave an extension on a loan paid by New Song in Aurora.
- The board adopted an addendum to the Cafeteria Plan offered through the Concordia Plans.
- Because Andrea Pitkus declined election to the Board of Regents of Concordia University Chicago, a new election was held. Orlando Pabon was elected.
- Staff incentives and salary were set for the following fiscal year.

January 13, 2020

- The FY2020 budget (for February 1, 2020 to January 31, 2021) was adopted.
- The board authorized giving \$10,000 a year to the Belize Mission for the next three years.



**2022 Convention Report:
Summary of Actions Taken by the Board of Directors of the
Northern Illinois District during the Past Triennium**

March 14, 2020 (held at St. Peter, Arlington Heights)

- The board met with the Administrative Services Committee and the Taskforce on the Stewardship of District Resources. The main item of the agenda was to receive the report of the taskforce.
- The Rev. Michael Brown was elected North Region Vice-president to fill the vacancy left by the Rev. Kris Whitby joining the district staff.
- The board set the amounts that would be available for distribution from the endowment funds.
- The board adopted a motion stipulating that the parsonage at Zion Lutheran Church on 109th Street in Chicago would be initially included with the rest of the property, but could be sold separately if the buyer of the church property did not want the parsonage.
- The board agreed to lower the price by \$75,000 that it would accept for the sale of the property of Zion Lutheran Church on 109th Street in Chicago. This would not affect the list price, but give those handling the negotiations more flexibility.
- The board adopted a motion authorizing the president to begin the process of preparing the possible sale of the district office building, including a timeline and a communication plan. The decision whether to put the building up for sale would be decided at a later meeting.
- The board adopted a motion thanking the staff for their hard work.

April 3, 2020 (held via Zoom)

- A motion was adopted to take \$20,000 from the Worker Wellness and Mission outreach grant funds and use it as the district's 20% match for the Synod's Soldier of the Cross COVID-19 program.
- A motion was adopted to seek a Paycheck Protection Plan in an amount not to exceed \$220,000.

May 27, 2020 (held via Zoom)

- A motion was adopted to authorize President Buss to prayerfully take all appropriate actions to safely reopen our churches, including, but not limited to, sending a demand letter or taking legal action.

June 15, 2020 (held via Zoom)

- The board approved the audit for FY2019.
- The distribution of endowment grants was approved.
- Since FY2019 had ended with a surplus of \$106,383, the board resolved to distribute \$100,000 of it in the following way: \$5,000 for the Belize mission; \$5,000 to the Education Endowment for preparing future church workers; \$5,000 to Synod; and \$85,000 for future mission and ministry support.

July 10, 2020 (vote held electronically)

- Resurrection Lutheran Church in Rockford was accepted into membership in the Synod.



**2022 Convention Report:
Summary of Actions Taken by the Board of Directors of the
Northern Illinois District during the Past Triennium**

September 28, 2020 (hybrid Zoom/in-person meeting held at Immanuel Lutheran Church in East Dundee)

- The board issued a full-time, renewable four-year call to Deaconess Lori Trinche to handle administrative and financial matters as well as life ministries.
- The board ratified the president's decision to postpone the convention until July 30–31, 2021.
- The healthcare premiums for employees, their spouses, and their dependents were set for the next year.
- The board authorized the sale of the district office at a selling price that would yield no less than \$500,000 in net proceeds to the district.
- The board adopted an overture to the district convention, which would state that the regents of Concordia University Chicago would begin their term immediately at the close of the convention and which would allow flexibility in setting the date for the service of induction for all elected offices.
- The board adopted an overture to the district convention calling for formal recognition of the Word-Wellness-Witness emphasis.
- The board adopted an overture to the district convention calling for the district to recognize the Belize FORO as the district's official mission partner.
- The board adopted a motion to take the gift of \$12,032.75 from the late Marjorie G. Kruse and designate \$4,000 for the NID Endowment Fund, \$4,000 for the NID Educational Endowment Fund, and the balance for mission and ministry needs in the budget.

November 9, 2020 (hybrid Zoom/in-person meeting held at St. Paul Lutheran Church in Oak Lawn)

- Housing allowances were set for the staff for 2021, as well as for the newest staff member for the remainder of the year.
- The board adopted an overture to the district convention that would make explicit in the district bylaws the power that the board has through the Synod bylaws to hold electronic meetings.
- The board agreed to hire Mueller and Company to audit the books for FY2020.
- The board agreed to sell the property of Zion Lutheran Church on 109th Street in Chicago to Kingdom Covenant Church. The minimum dollar figure stipulated in an earlier resolution was removed.

January 11, 2021 (held via Zoom)

- The budget for FY 2021 (for February 1, 2021 to January 31, 2022) was adopted.

March 6, 2021 (hybrid Zoom/in-person meeting held at the Campus Life Center of St. Matthew Lutheran Church in Barrington)

- This was a joint meeting with the Administrative Services Committee.
- A motion was adopted to have the district convention at Concordia University Chicago on March 11–12.
- The board determined that the \$339,000 proceeds of the sale of the property of Zion Lutheran Church on 109th Street in Chicago would be allocated in the



**2022 Convention Report:
Summary of Actions Taken by the Board of Directors of the
Northern Illinois District during the Past Triennium**

following way: \$75,000 for urban ministries; \$75,000 for preparing future church workers (i.e., a contribution to the Education Endowment); \$75,000 to the NID Endowment Fund; \$15,000 for the Belize foreign mission; and \$99,000 for NID relocation and occupancy expense.

- The board set the amounts that would be available for distribution from the endowment funds.
- The board adopted a motion to transition our funds with Thrivent gradually into a faith-based investment portfolio.
- The board approved returning the Paycheck Protection Program loan the district had received in 2020 rather than asking for the loan to be forgiven. In so doing, the board explicitly noted that their action does not imply any precedent for other entities or congregations who may decide in good faith to apply for loan forgiveness based on their situation and the original intention of the loan program.

June 21, 2021 (hybrid Zoom/in-person meeting held at St. Paul Lutheran Church in Matteson)

- The board approved the audit for FY2020.
- The board adopted a motion to distribute the fiscal surplus of \$83,000 from FY2020 in the following way: \$15,000 for future church workers by adding to the endowment fund; \$15,000 for urban ministries; \$10,000 for Voice of Hope (as a matching gift to encourage fundraising); \$5,000 for Voice of Hope (a straightforward gift); \$12,500 for ethnic ministries; \$10,000 for NID Endowment (grant funding); \$6,500 for future Mission and Ministry support; \$5,000 for Foreign Mission (Belize); \$2,500 for Hispanic Ministry Education; and \$1,500 for Life Taskforce initiatives.
- The board adopted a motion to designate the proceeds (\$75,526) from the sale of the parsonage at Zion Lutheran Church on 109th Street in Chicago: \$57,000 for urban mission and ministry; \$10,000 for urban church worker care; \$4,500 for ethnic ministry worker training; and \$4,026 for NID Black ministry.
- The board adopted an overture to the district convention to change the bylaws to require only four meetings per year.
- The Rev. Rev. David Totsky was appointed to serve on the Constitution Committee.
- The Rev. Caleb Schauer was elected to serve as West Region Vice-president to replace the late Rev. Kenneth Krause.

September 20, 2021 (hybrid Zoom/in-person meeting held at Lord of Life Lutheran Church in La Fox)

- The health care premiums for employees, their spouses, and their dependents were set for 2022.
- Erin Dunwell was approved as a new Administrative Services Committee member.
- The board adopted an overture to the district convention specifying how the convention offering should be distributed.



**2022 Convention Report:
Summary of Actions Taken by the Board of Directors of the
Northern Illinois District during the Past Triennium**

- The Rev. Joel Hess was elected to serve on the board of directors as ordained minister from the East Region. He replaced the Rev. Mark Birkholz, who had taken a call outside the East Region.
- The board approved a change in the Thrivent investment policy as it pertained to the NID Education Endowment.

November 8, 2021 (hybrid Zoom/in-person meeting held at St. Peter Lutheran Church in Schaumburg)

- The housing allowance for staff for 2022 was set.
- The board approved hiring Mueller and Company to audit the FY2021 books.
- The board adopted a motion authorizing the sale of the ten-acre property the district owns in Poplar Grove. The motion also authorized the district to collect rent on the property until the time it is sold.
- The board adopted the following distribution of funds from the proceeds received from Good Shepherd in Des Plaines upon their closing: \$57,907 for Partnership Scholarship Funds (Ethnic Immigrant Institute of Theology and the Center for Hispanic Studies); \$200,000 for mission target grants; and \$200,000 for the Enduring Ministry Fund.

Congregational Constitutions and Bylaws Changes Approved

December 18, 2017

Immanuel (Hinckley)

January 16, 2018

St. Paul (Melrose Park)

March 19, 2018

Ascension (Niles), Christ the Rock (Rockford), Immanuel (Richton Park), St. Matthew (Barrington), and St. Matthew (Hawthorne Woods)

June 18, 2018

St. James (Chicago), St. John (Chicago), and St. John (Union)

September 10, 2018

Bethany (Naperville) and St. John (Pecatonica)

October 29, 2018

Fellowship in Faith (McHenry), St. John (Beecher), and St. John (Pecatonica)

March 18, 2019

Faith (formerly called North Shore Ministries) (Lake Forest), Redeemer (Waukegan), and Zion (Naperville)

June 17, 2019



**2022 Convention Report:
Summary of Actions Taken by the Board of Directors of the
Northern Illinois District during the Past Triennium**

Apostles (Melrose Park), Lord of Life (La Fox), and Trinity (Tinley Park)

September 9, 2019

Ascension (Niles), Bethany (Naperville), and Immanuel (Batavia)

November 4, 2019

Bethlehem (River Grove), Trinity (Lansing), and Zion (Bensenville)

January 13, 2020

Friends in Christ (Morris) and Vida y Fe (Elgin)

March 14, 2020

Our Savior (Carol Stream), St. John (Union), and St. Peter (Morrison)

June 15, 2020

Prince of Peace (Palatine), Resurrection (Rockford), and St. Mark's (St. Charles)

January 11, 2021

Bethany (Naperville) and Prince of Peace (Palatine)

June 21, 2021

Calvary (Elgin), Immanuel (Hinckley), St. John (Chicago), St. Paul (Aurora), Word of Life (Naperville), and Zion (McHenry)

Respectfully submitted,

The Rev. Dr. James A. Kellerman
Northern Illinois District Secretary



Task Force on the Stewardship of District Resources Report

Presented to Northern Illinois Board of Directors on March 14, 2020

Introduction

At the last Northern Illinois District (NID) Convention, resolution 2-07: To establish a Task Force on Stewardship of District Resources was made and adopted. The Blue Ribbon Task Force was formed as a result. The committee members are:

Leonard Payton – Chair
Carol-Joy Motisi – Secretary
Fred Buhlman
Micah Greiner
Janet Johnson
Betsy Karkan
Terry Pfortmiller
Ron Rock
David Rogner
Rick Schauer
Matt Troester
Steve Zielke

The committee was tasked to examine a number of topics, including but not limited to the following four topics.

- ❖ The need for a full-time or part-time district president.
- ❖ Ways in which volunteers and circuit visitors may be utilized to carry out the functions currently done by district staff.
- ❖ The stewardship of maintaining the current district office building.
- ❖ The potential partnership in sharing resources with neighboring districts.

The committee has not taken this task lightly and has met diligently and prayerfully regarding the matters at hand. The convention resolution was driven by the fact the current operating model seems unsupportable given current contribution levels, staff salaries, and fixed building costs.

The focus is to look outward to new opportunities and not inward only. God is always leading us forward and we rejoice. We do not want to lose our priorities of mission first in bringing the Gospel of Christ.

Full-Time vs. Part-Time District President



Task Force on the Stewardship of District Resources Report

Background / Rationale:

Article XII.3 of the LCMS bylaws mandates a number of district officers including a district president. This article entrusts to the districts the compensation of these officers and makes no determination as to whether a district president should be full or part time. Given 1) the number of congregations in the NID, 2) the Synod's requirements for district presidents to make official visits of all congregations at least once every three years, 3) the number of distressed congregations and church workers, and 4) the regular and extraordinary demands of ecclesiastical supervision which a district president must perform, it appears unlikely that the NID could be properly served by a part-time district president for the foreseeable future. Nevertheless, this matter should be revisited from time to time, especially when the time comes for the election of a new district president. His vision and desire for advancing the Gospel and for how to approach the tasks entrusted to his care should be carefully considered, along with the financial condition of the district itself.

Certainly, district vice presidents and circuit visitors may perform some of the visitation work assigned to the district president with this caveat: unless those officers are retired parish pastors, their responsibilities to their own congregations preclude many official visits to other congregations.

Bylaw 1.2.1 (j) of the LCMS bylaws - "Ecclesiastical supervision." The responsibility of a district president within a district "includes visitation, evangelical encouragement and support, care, protection, counsel, advice, admonition, and, when necessary, appropriate disciplinary measures...." The committee understands "evangelical encouragement" to include active promotion of the mission of Christ. The pastor and congregation need to hear the encouragement of the Gospel and they need to be encouraged to be speaking the Gospel too.

Much within Bylaw 1.2.1 (j) can be accomplished by persons other than the district president and with Recognized Service Organizations (RSO). This certainly is to be encouraged. Nevertheless, 1) the Synod mandates that the district president be engaged in these activities, and 2) "appropriate disciplinary measures" cannot be delegated. There is a reason that the Synod has placed the necessary authority of the law into the hands of the local district president.

"Appropriate disciplinary measures" are costly in time and unpredictable in their occurrence. Just as firemen and military personnel spend much of their time on readiness and (hopefully) little on intervention; they are not ready for the emergency if



Task Force on the Stewardship of District Resources Report

they are not engaged in readying themselves and not available when the emergency arises. A district president who is a part-time parish pastor and part time district president will consequently be less ready and available to take the “appropriate disciplinary measures” that the Synod mandates. This issue must also be considered should a future district president or board of directors determine that having the role become part time is advantageous.

Bylaw 2.5.1 of the LCMS bylaws - “Congregations, [...] of the Synod shall seek the counsel of the district president when calling ordained or commissioned ministers.” Since the Northern Illinois District includes over two hundred congregations, some of which have parochial schools, there will be an ongoing turnover of ordained pastors and commissioned ministers of religion, and the district president’s engagement is mandated by the Synod. Sometimes, congregations are not vacant because of retirement, but because of some lingering and festering conflict. A part- time district president could consequently be less engaged in these fragile cases. In any case, the Synod – as per bylaw 2.5.1 – does not consider the involvement of the district president in the call process optional.

Several districts smaller than the NID maintain a full-time district president because of the demands of the shepherding role.

Recommendation:

We recommend that the district president remain a full-time position for as long as the current demands and expectations of the position remain in place. We also recommend the NID Board of Directors (BOD) and District President actively discuss this on an ongoing basis; especially should the need and opportunity arise to consider reducing the position to a part-time role and in times of transition from one district president to the next.

It is also recommended to propose at the next district convention for the synod to add clarification on role responsibilities and expectations of the district president. The Synod may need to clarify bylaw 1.2.1 (j) to emphasize a primary responsibility of a district president is to proclaim the Gospel of Christ. The district has no control over the Synod bylaws. The board of directors, circuits, and congregations of the Northern Illinois District might consider offering overtures to Synod on this matter.



Utilization of Volunteers and Circuit Visitors Instead of District Staff

Background / Rationale:

Article XII.2 of the LCMS bylaws - “each district is at liberty to adopt such bylaws and pass such resolutions as it deems expedient for its conditions....”

The LCMS constitution and bylaws leave programming and office staffing entirely up to the discretion of each district. At the first meeting of the Blue Ribbon Task Force on structure, we were presented with the historical trends and future funding projections for the NID. It appears that the era of district office driven programming may be at an end. Mission programs will need to be initiated and driven by congregations, perhaps with help from RSOs. The district president may function more like a consultant or facilitator. As the president visits the district congregations, he may be able to help congregations share effective ministry strategies with each other. Of course, the district president would remain the ecclesiastical supervisor.

There has been current evaluation of staffing needs by the NID office and changes have been made. For example, the full-time position recently held by Mike Mast is now being filled with a part-time position. The use of circuit visitors and district vice presidents is also currently being addressed and encouraged.

Recommendation:

We recommend the district president and staff continue to make full utilization of volunteers and circuit visitors to accomplish the purposes of the NID in consideration of staffing needs. However, we also recognize congregations increasingly look to RSOs and other agencies for assistance in carrying out the outward facing mission of the church Jesus has given. As such, the need for district programming may be decreasing. We recommend the BOD continue to evaluate current staffing and eliminate or combine positions when possible. We recommend the BOD give concentrated attention to the various duties of the NID serving as an agency to advance the mission within the district. Until such time the LCMS changes its constitution and bylaws regarding district presidents, we recommend the BOD focus energies and resources on the highest quality ecclesiastical supervision possible. It is reasonable to expect the district president will be a vigorous advocate for the mission of the Gospel through his visits within the local congregations and among the



Task Force on the Stewardship of District Resources Report

ministerium. We do expect the district staff to champion and be engaged in our Lutheran doctrine.



Stewardship of Maintaining the District Office Building

Background / Rationale:

The NID office building is a split-level design with no windows on the upper floor where the offices are. The lower level has windows, but at the very top of the walls. Parking space and access to the parking space (driveway) is not part of the NID property. Parking and access is through a rental agreement with Immanuel Lutheran Church – Hillside. The Immanuel rental expense in FY2019 was \$1,950. FY2020 was budgeted at \$2,050. Total NID building expenses for FY2019 were \$64,757.21. The budgeted FY2020 NID building expenses are \$71,928.00 and actual is not completed yet (the fiscal year ends January 31st). The increase is primarily due to anticipated building repairs needed. Included in these figures is rental income of \$13,200 per year from LCEF renting office space. There are other financial details to consider here such as depreciation expense of approximately \$25,000 per year, which will be fully depreciated in 2022. These figures are meant to provide an overall awareness of the costs of the NID building on an ongoing basis each year. This would not include anticipated building improvements, which would need to be made if the NID office building is kept. The current boiler is 42 years old and has asbestos coverings. The boiler would most likely be replaced with a forced air system. The current roof has been leaking and the district is currently getting estimates for repair and/or replacement. These would be expensive building improvements. Building improvements would be depreciated over time vs. a one-time expense; however, it would be a one-time hit to cash flow.

The Blue Ribbon Task Force also thought it would be important to have an appraisal done on the NID office building. The appraisal came back with a value of \$700,000. The value is considered to be in the land itself and not so much in the building. It was thought most buyers would probably tear down the building. Again, the access and parking for the building is a definite issue. The property is zoned residential. As with all real estate, it is hard to predict how saleable the property is even with the access and parking issues. The current market for land is flat and there are not good comparable properties to the NID property. The appraiser and advisor doubt many buyers exist, but one never knows.

The Blue Ribbon Task Force conducted a detailed survey in the district. Results regarding the district office were as follows:

- ❖ How important to you is the NID office in Hillside?
 - For the vast majority (approximately 80%) it is unimportant.



Task Force on the Stewardship of District Resources Report

- ❖ How often a year do you personally visit the NID office?
 - 43.6% Never
 - 30.2% Occasionally
 - 16.8% Sometimes
 - 9.4% Often
- ❖ Would you make greater use of NID resources if the NID office were located somewhere else?
 - 13.1% Yes
 - 86.9% No
- ❖ Do you consider the NID office in Hillside to be in a central location to the District?
 - 73.4% Yes
 - 26.6% No

The building subcommittee surveyed the current district staff in the NID office building. About half indicated they could work from home. All agreed they preferred having the opportunity to work together in a central location as a team with the ability to network with each other. The staff felt this would be lost if they had no central working office.

Alternatives to having an owned NID office were discussed. Options considered were using:

- ❖ Excess space in a NID member congregation.
- ❖ Using Concordia University Chicago (CUC)
- ❖ Renting office space in an area close to the current NID building.

Some members of the committee were concerned that using excess space in an existing congregation might run the risk of helping one congregation over another with their sunk overhead costs, thus practicing favoritism. Others on the committee did not see this as an insurmountable concern. Should the Board of Directors elect to house the district office in a congregation's space, they will need to weigh this consideration carefully.

Maintaining an owned district office, using CUC or using congregation space, keeps the advantage of using a tax-exempt facility. Renting office space would lose this tax-exempt benefit as property taxes are usually built into office rents. Due to staff reductions and position restructurings, it was determined 3,500 square feet of office space would be needed for future NID staffing needs instead of the current 8,300 square feet. This would include a small conference room space for the staff. Using an



Task Force on the Stewardship of District Resources Report

average cost of \$18/SF (current rates range from \$12 to \$20 per square foot) in the same general area as the current office, this would equate to \$63,000 per year. CUC might have smaller square footage spaces available to lease (2,500 to 2,800 square feet) that the District could use. The available CUC space is smaller than the recommended square feet needed. The official square footage space would vary with respect to small meeting space depending on whether space was leased at CUC, in a commercial space, or was shared with a local congregation.

Recommendation:

We recommend the NID BOD carefully review the facts provided in this document in considering a decision to sell the NID property. The Blue Ribbon Task Force sub-committee on the building is available for additional information and support.

Some members of the committee believe CUC would be a better choice for having the district office over using excess space in an existing NID congregation should it be decided to sell the NID office. CUC would be a more viable, unbiased location. Deciding between renting office space or CUC space would favor the non CUC office space since the annual costs would be close and the CUC space is not enough square feet. Rental costs of CUC or an office space would be close to, if not more, than the current cost of keeping the NID building (without building improvements). It still might be better to rent office space in the long run since the current owned NID building will need expensive improvements in the near future. NID BOD meetings could be rotated around the district churches are willing to host the BOD and have conference space to fit the BOD. Rotating the BOD meetings would also enhance knowledge of the NID and the mission of spreading the Gospel of Christ. These churches would develop a connection with district. Even the mundane matters such as food for those events could help connect lay people to their district. The potential sale of the Hillside property could provide an opportunity for the district to be more agile and more engaged with more people within the district, giving a sense the work and mission of the district is initiated and conducted in and by the parishes of the district, and not primarily in some sort of “headquarters.”

As one reviews the facts and options, it is a very complex decision. We realize the BOD has a difficult road ahead and are grateful to the BOD for the amount of work this decision will involve.

The literal NID brick and mortar building on Wolf Road should not represent the district. We must remember and insist it's the congregations, NID president, BOD and



Task Force on the Stewardship of District Resources Report

staff that make the district. Some sort of physical place is needed, but it's not really about the place. It's about the MISSION of bringing the Gospel of Christ to the world.

Our survey of the members of the district was not sufficiently sophisticated to determine what the building means to the people of the NID. All buildings say something about the organizations they house. The BOD will have to draw its own conclusions.

The work of the building subcommittee showed the sale of the building might almost be a wash, and the people of the district should not necessarily look to the sale of the building as a useful cash windfall.

Partnership with Neighboring Districts for Sharing Resources

Background / Rationale:

The task force pursued the possibility of sharing resources with other districts. Our efforts did not yield satisfying fruit. We would request congregations and circuits of the district to send requests to the Synod in convention asking for direction and relief to explore other opportunities in district partnerships and shared resources. Other districts might not be at the same point to discuss shared resources. Synod is the body with authority that is able to lead and provide guidance on shared district resources. We consider it an urgent matter.

It may be possible for the district to share resources with other agencies as well, i.e., congregations, CUC and RSOs. We did not explore that at length, though the board of directors is encouraged to consider this possibility as well. The NID district president has engaged other districts at the Council of Presidents and the conversation has begun. We have no direct control, but the conversation has started.

Recommendation:

We recommend the NID BOD and District President continue to pursue collaborative relationships with neighboring districts; however, we do not expect good progress and gained efficiencies in the near future. We encourage the BOD to engage Synod to address district networking at convention or even district re-alignment. This would come in the form of overtures sent up to Synod in convention. Furthermore, congregations and circuits would do well to make such overtures too.



Concluding Thoughts

Our cultural climate is fluid, and our response in mission must be agile. The district organizational structures we have typically known were top down and worked well within a past culture that lived with that expectation. If we reduce current district infrastructure, we may well discover a more agile response that is ground up from within our congregations. The NID is the congregations! That is the message which must be repeatedly given. The district office is a resource to further the mission of spreading the Gospel of Christ.

If the NID becomes more agile in mission, congregations and circuits contemplating resolutions to the district convention should consider 1) refraining from offering those resolutions if they will result in staffing and expense requirements burdening the district office; or 2) funding the cost the resolutions would mandate. The district president and district office are currently mandated to carry out the resolutions of the district convention. Such resolutions, however, partly necessitate the kind of structure the NID has had for so many years.

We do not want to lose or diminish the NID. We need the identity and focus of the NID.

We need good leadership! We are better together as a district than alone!

The task force was composed of volunteers who gave of their time. The issues were at times complex, and on some of them, we have not arrived at firm consensus though the committee worked well together. This document is only advice. May God bless the Board of Directors as they execute the matters of the Northern Illinois District.



Task Force on the Stewardship of District Resources Report

RESOLUTION 2-07:

To Establish a Task Force On Stewardship District Resources Referencing Overture 2-06

WHEREAS, it is our responsibility as God's people to be good stewards of the gifts and resources our Lord has given us, and

WHEREAS, the Northern Illinois District of The Lutheran Church-Missouri Synod has seen

declines in both the number of congregations and in total membership in recent decades, and

WHEREAS, demographic data suggests that this decline will continue for some time, and

WHEREAS, it is our responsibility to plan for the future, and

WHEREAS, it is often helpful to have individuals examine organizational structure who are not

part of that structure, therefore be it

RESOLVED, that the new board of directors establish a Task Force to examine stewardship of

District resources, and be it further

RESOLVED, that said Task Force be composed of three members of the Board of Directors,

three laypersons not on the Board of Directors with experience and expertise in large organizations and management, and three parish pastors and three Commissioned workers,

both with extensive familiarity with the District that do not hold office in the District, and be it

further

RESOLVED, that among the questions the Task Force should examine but not be limited to are

the following:

1. The need for a full time or part time District President

2. Ways in which volunteers and circuit visitors may be utilized to carry out the functions

currently done by District staff.

3. The stewardship of maintaining the current District Office Building.

4. The potential partnership in sharing resources with neighboring districts and, be it further

RESOLVED, that the Task Force shall issue a report to be communicated throughout the District

at least one year prior to the next District Convention, and be it finally

RESOLVED, that the Task Force recommendations be presented to the Board of Directors for

any actions the Board deems appropriate." Action: Adopted



Introduction

The Education Office is blessed to support and provide services for all Commissioned Workers in the LCMS Northern Illinois District. The work done through this office focuses on our three mission pillars - Word, Wellness, Witness.

Schools

We currently have **91** schools sharing the love of Jesus and Christian focused academic instruction each day.

44

Freestanding Early
Childhood Centers

44

Elementary
Schools

2

Middle/
High Schools

Concordia
University
Chicago

We shared approximately **25** chapel services for schools through each year of this triennium.

Lois Stewart has visited **100%** of the NID schools each year since 2018 with the exception of 2019-2020 (COVID year). She carefully honored the protocols set in place for each individual school. During that year, she visited approximately 30 of the schools. All others were contacted numerous times by phone, email, Zoom, and written communication.

There have been approximately **300** Baptisms during this triennium.

Leadership, teacher, and support seminars and conferences were held prior to the COVID pandemic. Once the pandemic hit, all connections went virtual for 18+ months. It was important to bring workers together to hear God's Word, pray, be uplifted, share strategies, etc. Approximately **200** Zooms were scheduled and held for workers in our schools.



Parish Professionals

The Parish Professionals meet in person monthly for Bible Study, prayer, and networking. During the height of the pandemic, Zooms were held monthly to bring the workers together.

A 60th anniversary celebration chapel service for the Director of Christian Education Program at Concordia University Chicago was held followed by a reception.

A 40th anniversary celebration chapel service of the Concordia Deaconess Program at Concordia University Chicago was held followed by a reception.



The 2018 National Youth Gathering in St. Paul, MN was a blessing. 500 youth and adults attended.

The NID has two dedicated Director of Christian workers serving as coordinators for planning of the 2022 National Youth Gathering in Houston, TX. The NID is planning some events with Central and Southern Illinois Districts as well.



Parish Nurses

The LCMS Northern Illinois District Parish Nurse Network is supported through the Education Office.

As with other gatherings, the nurses met in-person prior to the pandemic, Zoomed with the height, and this fall, have begun meeting in person again.



2022 Convention Report:
Rev. Kris Whitby, Assistant to the President - Mission and Ministry

As our Lord blesses us to have His Word dwell in us richly, He well-equips us to serve His people and to share His Gospel in the harvest field. I am grateful to our Lord for His Word wherein He gives me the gift of His grace in Christ Jesus and equips me for the service to which He has called me.

Since the last convention, beginning in January 2020, our Lord moved me from serving as a Sr. Pastor to serving the NID as Assistant to the President – Mission and Ministry. This is a new district position, designed to address District administrative needs, assist congregations in carrying out their mission, and assist the Office of the President with churches, schools, and ministries under the banners Word, Wellness, and Witness.

Let me share some of the highlights of the work Christ has given this office to do in service to you!

Word

Incarnate Community Study

During the pandemic, the Church learned to adapt ministry where people lived physically distant. These days of isolation presented the opportunity to revisit the great blessings our Lord gives His people gathered around Word and Sacraments as inperson

communities of faith. To do so, Incarnate Community was developed. This four-session study was written to engage participants with how the Bible addresses the inperson aspects of being God's redeemed people. Related sermon materials were also developed by four local pastors. Each week of the study [just completed last month] an online streaming program was held where President Buss, along with pastoral and lay guests, discussed each session on a deeper level. This also afforded the entire District the chance to dialogue together over God's Word and matters that touch us all.



Wellness

Pandemic Response

As the pandemic brought the world to a halt, the NID staff responded to support churches and schools. We called on pastors, educators, medical and mental health care workers, to work with us to issue resources that would assist congregations and schools in effectively shutting down during the shelter in place orders as well as ways to effectively reopen these institutions as mitigation measures were eased and lifted. We responded to countless calls and emails with questions related to everything from how to conduct funerals to how to deal with masking issues. We also worked with other religious groups to secure a path to get school staffs vaccinated when vaccinations were in short supply.

Our district worked with Synod and the LCEF to care for church workers who were financially impacted by COVID. Through the Soldiers of the Cross – COVID Response grant, numerous NID church workers were given financial relief gifts in their time of need.



Witness

Endowment and Partnership Grants

Even in challenging days, what a joy to partner with churches, schools, and ministries as they creatively reached out to their communities with the Good News of Jesus! Through grant programs, our entire District supplied resources for community connection for the sake of Christ. Working together, our District was able to help local ministries to:

- Nurture public education students in their faith through outdoor education at Walcamp.
- Reach the Latinex community near St. John's, Union and Zion, Marengo through ESL classes.
- Feed numerous families through support of food pantries at Immanuel, Hillside and Lord of Glory, Grayslake.
- Create a coding lab for students of Good Shepherd Christian Academy, Chicago.
- Equip youth to serve Christ through technology at St. Paul, Dorchester.
- Support launching Redeeming Life Maternity Home in the NID.
- Build an Outdoor Urban Playscape at St. Phillip, Chicago.
- Bring Bible studies to those with cancer through Phil's Friends.

The list could joyfully continue!



What does the next triennium hold for NID? Wherever our Lord leads us, may He continue to fill us with His Word, and may a hymn of praise to Him be on our lips that others might know Jesus as Savior through our mission and ministry!



Goal of Communications

The goal of Communications is to support the overall mission of the LCMS Northern Illinois District through communications to our stakeholders including

- Congregations
- Church workers
- Congregation members (people in the pew)
- Donors
- Partners (RSOs, educational, business)
- People outside the church walls

Since the last convention, the mission of the LCMS Northern Illinois District is directed toward Advancing His Kingdom under the pillars of Word, Wellness, and Witness.

Highlights of our work together in communicating the mission

Identifying Mission and Vision

To keep the focus on the path He has laid out before us and to allow us to communicate that mission in a consistent manner through all communications, a new logo and branding was developed for the NID.



Northern Illinois District
The Lutheran Church—Missouri Synod

Icons were created for each of the pillars of Word, Wellness, and Witness to reinforce the focus of our work together in Advancing His Kingdom in the NID. The logo and icon elements are also reinforced in the new design of our website NIDLCMS.org.



Challenges

While we look back over our work since the last convention, it is imperative to look at challenges and opportunities that will present themselves for District communications in the future. Effective communication has become increasingly important to our work together. It affects engagement, internal satisfaction, and overall public perception. The ability to see common communication challenges can be summed up as delivering the right message to the right people at the right time through the right media. Engagement, consistency, technology, relevancy, collaboration, advocacy, and budgetary are all important aspects in the overall communications strategy.



The 60th Convention of the Northern Illinois District of The Lutheran Church-Missouri Synod

2022 Convention Report: Ann Ciaccio, Director, Communications

The impact of COVID

COVID impacted communications in a large way. While we were already set up with Zoom, we could not imagine the blessing that God provided us through it in order to support our work together.

Zoom meetings

(9/1/2020-8/31/2021)

285 meetings
153,218 minutes
1,905 participants

Webinar topics

Health and wellness
Ethnic ministry gatherings
Special guest speakers

Systems security

In order to best protect files previously stored on a hard drive, Communications led a project to move all files to a cloud based system.

The system's features

Elimination of the threat of hard drive failure

Sharing of files securely from anywhere, any time, on any device

Elimination of bandwidth limitations


Rapid ransomware detection

Time efficiencies, smarter workflow, ease of collaboration

Staying connected


 Facebook.com/LCMSnorthernillinoisdistrict

 @LCMSNID

 LinkedIn.com/groups
LCMS Northern Illinois District

 YouTube.com
Channel NIDLCMS

 Instagram.com
lcms_northernillinoisdistrict

 Go to your favorite podcast channel
Search "Northern Illinois District"

 NIDLCMS.org
NIDnews.org

 Group emails

 Network groups

Group emails

(average 12 month period)

290+ emails

Sent to 136,347 emails

With 64,614 opens

Open rate 50% - Industry average 20%

Having 6,831 individual email addresses

Ministry Update

(average quarterly distribution)

Mailings 1,500+ print/2,000+ email

Database

9,739 active records as of 10/31/2021



The 60th Convention of the Northern Illinois District of The Lutheran Church-Missouri Synod

Treasurer's Report

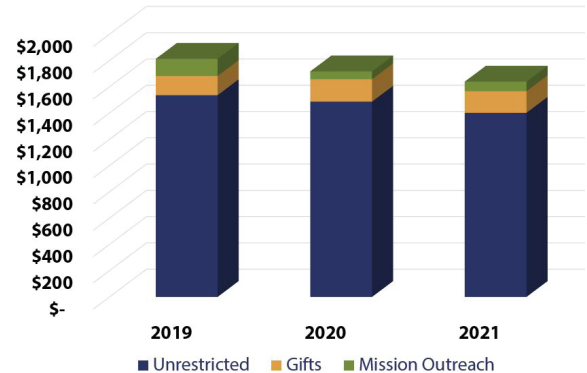
The LCMS Northern Illinois District congregations continue to support the work of the district as well as the ministries of the Lutheran Church Missouri Synod through monetary support, volunteer contributions, and prayer. Support from congregations for the most recent fiscal year ending January 31, 2021 totaled \$1,639,088. Individuals, grants, and others contributed an additional \$346,825. We continue to be grateful to those congregations, families and individuals that have financially supported the District and our work together. We continually seek to be good and faithful stewards of these gifts and resources to Advance His Kingdom throughout the Northern Illinois district.

In each of the prior three fiscal years, the LCMS Northern Illinois District has received unqualified opinions from the independent audit firm, PKF Mueller, which in part stated, "the financial statements present fairly, in all material respects, the financial position of the District as of January 31, 2019, 2020, and 2021..." The full audited financial statements are available upon request.

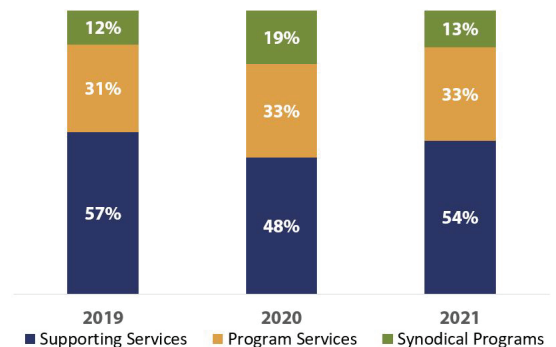
In connection with the 2018 District convention, a resolution was passed which established a task force to examine the best stewardship of District resources. In response to the committee's report, the LCMS Northern Illinois District Board of Directors has approved the sale of the building. It is anticipated that the sale will be completed and the office will be relocated in 2022 to a lower cost facility which will enable the District to be better equipped to serve its congregations and schools.

For the Years Ended January 31, 2021, 2020, and 2019

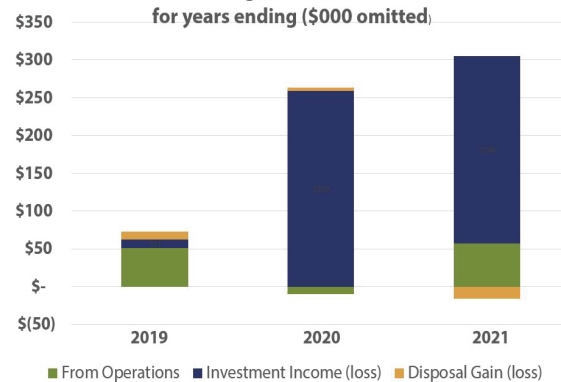
Congregational Support
for years ending (\$000's omitted)



Percentage of Expenses
Related to Operations & Activities
for years ending



Change in Net Assets
for years ending (\$000 omitted)



By God's Grace

20% unrestricted congregational support shared directly with Synod totalling **\$884,943** for the prior three fiscal years*

104 total annual scholarships granted for prior three fiscal years* to future church workers, Hispanic church workers, and mentoring of new pastors through the PALS program.

Over **\$62,000** direct support to Hispanic ministries during the prior three fiscal years*.

5 Wellness Care Team members available to serve the needs of over **600** called workers.

32 grants awarded for the prior three fiscal years* through Endowment and Partnership Grants to assist congregations connecting with their communities.

Over **\$27,000** support provided to various ministries serving Belize since 2020.

\$19.64 average unrestricted congregational support per communicant member as of January 31, 2021.

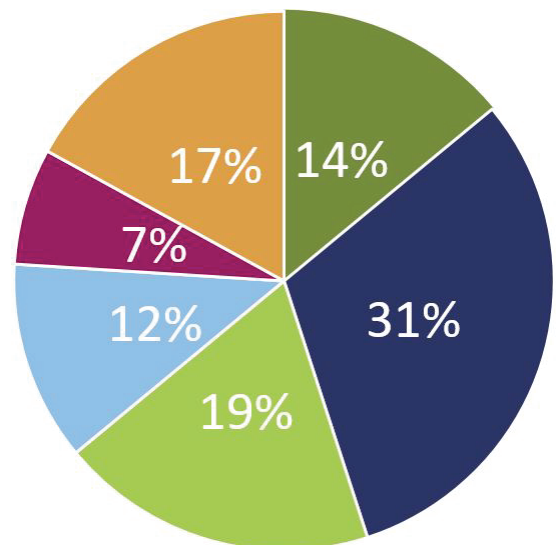
\$64,389 COVID-19 need- based assistance provided in partnership with Synod and LCEF to over **37** church workers through Soldiers of the Cross in 2020.

*For prior three fiscal years ending January 31, 2019 through January 31, 2021.

Through God's Gifts

Proposed Resource Usage For Fiscal Year Ending January 31, 2022

- Congregational and Pastoral Guidance
- Outreach
- Mission & Ministry Support Team, General Office & Occupancy Expenses
- Lutheran Church Extension Fund
- LCMS National Missions & Ministry
- Lutheran Education and Schools



Summary of Financial Activities

For the Years Ended January 31, 2021, 2020, and 2019

Support, Revenue, & Other Additions	2021	2020	2019
Support from Congregations	\$ 1,639,088	\$ 1,717,111	\$ 1,814,739
Support from Individuals, Grants, and Other	346,825	278,253	451,045
Conventions, Conferences, & Workshops	4,440	205,059	158,752
Other Revenues & Additions	187,017	264,358	213,723
Total Support, Revenues, & Other Additions	2,177,370	2,464,781	2,638,259
Expenses			
Program Services	1,132,509	1,185,337	1,466,741
Synodical Programs	285,372	480,922	308,963
Supporting Services	702,545	808,659	810,484
Expenses Related to Operations & Activities	2,120,426	2,474,918	2,586,188
Change in Net Assets Related to Operations & Activities	56,944	(10,137)	52,071
Investment Income (loss), Net	247,263	259,649	11,313
Gain (loss) on Disposal of Property & Equipment	(16,310)	3,723	10,734
Net Change in Net Assets	\$ 287,897	\$ 253,235	\$ 74,118

Derived from the audited financial statements. Includes restricted activity.



2022 Convention Report: Congregational Giving YTD January 2019

LCMS Northern Illinois District
Congregational Support
YTD January 31, 2019

REVISED CIRCUIT GROUPINGS EFFECTIVE JUNE 1, 2018

Other support consists of NSNB, District missions, gifts, & Synod

CIRCUIT	Congregation Name	City
---------	-------------------	------

2018 Fiscal Year-to-Date Through January 31, 2019				
# Comm Members	Unrestricted	Other	Total Support	Per Comm Member

	1 Beautiful Savior Lutheran Church	Antioch	72	\$12,184.00	\$0.00	\$12,184.00	\$169.22
	1 Immanuel Lutheran Church	Glenview	180	\$0.00	\$13,200.00	\$13,200.00	\$73.33
	1 Lord of Glory Lutheran Church	Grayslake	481	\$5,000.00	\$1,260.00	\$6,260.00	\$13.01
	1 Bethel Lutheran Church	Gurnee	401	\$16,000.00	\$0.00	\$16,000.00	\$39.90
	1 Saint Matthew Lutheran Church	Hawthorn Woods	1,253	\$23,350.00	\$0.00	\$23,350.00	\$18.64
	1 North Shore/Faith Lutheran Church	Lake Forest	342	\$12,000.00	\$0.00	\$12,000.00	\$35.09
	1 Good Shepherd Lutheran Church	Lake Villa	73	\$400.00	\$0.00	\$400.00	\$5.48
	1 Saint John Lutheran Church	Northbrook	32	\$1,500.00	\$0.00	\$1,500.00	\$46.88
	1 Grace Lutheran Church	Northbrook	170	\$2,000.00	\$0.00	\$2,000.00	\$11.76
	1 Community of Faith Lutheran Church	Spring Grove	61	\$0.00	\$0.00	\$0.00	\$0.00
	1 Prince of Peace Lutheran Church	Waukegan	136	\$200.00	\$0.00	\$200.00	\$1.47
	1 Redeemer Lutheran Church	Waukegan	126	\$3,500.00	\$0.00	\$3,500.00	\$27.78
1 Total			3,327	\$76,134.00	\$14,460.00	\$90,594.00	\$442.56
	2 Living Christ Lutheran Church	Arlington Heights	116	\$8,000.00	\$0.00	\$8,000.00	\$68.97
	2 Good Shepherd Lutheran Church	Des Plaines	90	\$5,000.00	\$0.00	\$5,000.00	\$55.56
	2 Immanuel Lutheran Church	Des Plaines	200	\$10,000.00	\$0.00	\$10,000.00	\$50.00
	2 Saint Luke Lutheran Church	Itasca	494	\$7,512.00	\$175.00	\$7,687.00	\$15.56
	2 Saint John Lutheran Church	Mount Prospect	254	\$1,095.00	\$0.00	\$1,095.00	\$4.31
	2 Saint Paul Lutheran Church	Mount Prospect	1,310	\$50,000.00	\$0.00	\$50,000.00	\$38.17
	2 Immanuel Lutheran Church	Palatine	1,274	\$7,762.00	\$0.00	\$7,762.00	\$6.09
	2 Prince of Peace Lutheran Church	Palatine	1,056	\$43,000.00	\$0.00	\$43,000.00	\$40.72
	2 Saint Andrews Lutheran Church	Park Ridge	445	\$8,555.00	\$0.00	\$8,555.00	\$19.22
	2 Our Redeemer Lutheran Church	Prospect Heights	105	\$1,650.00	\$0.00	\$1,650.00	\$15.71
	2 Calvary Lutheran Church	Wood Dale	64	\$0.00	\$2,250.00	\$2,250.00	\$35.16
2 Total			5,408	\$142,574.00	\$2,425.00	\$144,999.00	\$349.47
	3 Saint Matthew Lutheran Church	Barrington	260	\$24,200.00	\$0.00	\$24,200.00	\$93.08
	3 Faith Lutheran Church	Carpentersville	46	\$130.00	\$0.00	\$130.00	\$2.83
	3 Saint Peter Lutheran Church	Dundee	436	\$6,600.00	\$25.00	\$6,625.00	\$15.19
	3 Immanuel Lutheran Church	East Dundee	1,645	\$31,904.05	\$0.00	\$31,904.05	\$19.39
	3 Calvary Lutheran Church	Elgin	279	\$0.00	\$3,000.00	\$3,000.00	\$10.75
	3 Good Shepherd Lutheran Church	Elgin	1,080	\$12,000.00	\$0.00	\$12,000.00	\$11.11
	3 King of Glory Lutheran Church	Elgin	190	\$13,489.75	\$0.00	\$13,489.75	\$71.00
	3 Saint John's Lutheran Church	Elgin	959	\$4,800.00	\$0.00	\$4,800.00	\$5.01
	3 Bethlehem Lutheran Church	West Dundee	295	\$6,853.38	\$0.00	\$6,853.38	\$23.23
3 Total			5,190	\$99,977.18	\$3,025.00	\$103,002.18	\$251.59
	4 Saint John's Lutheran Church	Algonquin	515	\$1,800.00	\$1,000.00	\$2,800.00	\$5.44
	4 Holy Cross Lutheran Church	Cary	528	\$2,355.00	\$188.00	\$2,543.00	\$4.82
	4 Immanuel Lutheran Church	Crystal Lake	1,300	\$28,615.05	\$0.00	\$28,615.05	\$22.01
	4 Prince of Peace Lutheran Church	Crystal Lake	451	\$2,000.01	\$0.00	\$2,000.01	\$4.43
	4 Saint Paul Lutheran Church	Harvard	264	\$6,368.00	\$0.00	\$6,368.00	\$24.12
	4 Trinity Lutheran Church	Huntley	313	\$5,948.76	\$0.00	\$5,948.76	\$19.01
	4 Saint John Lutheran Church	Island Lake	128	\$2,115.00	\$0.00	\$2,115.00	\$16.52
	4 Fellowship of Faith Lutheran Church	McHenry	209	\$11,372.00	\$0.00	\$11,372.00	\$54.41
	4 Zion Lutheran Church	McHenry	471	\$8,274.84	\$0.00	\$8,274.84	\$17.57
	4 Saint John's Lutheran Church	Woodstock	419	\$5,211.69	\$0.00	\$5,211.69	\$12.44
4 Total			4,598	\$74,060.35	\$1,188.00	\$75,248.35	\$180.77
	5 Saint Paul Lutheran Church	Addison	252	\$6,448.34	\$0.00	\$6,448.34	\$25.59
	5 Saint Peter Lutheran Church	Arlington Heights	1,396	\$63,998.97	\$300.00	\$64,298.97	\$46.06
	5 Immanuel Lutheran Church	Bartlett	69	\$2,000.00	\$0.00	\$2,000.00	\$28.99
	5 Our Savior Lutheran Church	Carol Stream	576	\$43,922.12	\$0.00	\$43,922.12	\$76.25
	5 Family in Faith Lutheran Church	Glendale Heights	151	\$2,348.38	\$0.00	\$2,348.38	\$15.55
	5 Trinity Lutheran Church	Roselle	3,297	\$0.00	\$67,200.00	\$67,200.00	\$20.38
	5 Saint John Lutheran Church	Schaumburg	160	\$0.00	\$5,501.00	\$5,501.00	\$34.38
	5 Saint Peter Lutheran Church	Schaumburg	1,479	\$8,000.00	\$0.00	\$8,000.00	\$5.41
	5 Grace Lutheran Church	Streamwood	237	\$3,500.00	\$0.00	\$3,500.00	\$14.77
5 Total			7,617	\$130,217.81	\$73,001.00	\$203,218.81	\$267.38
	6 Immanuel Lutheran Church	Downers Grove	1,146	\$63,000.00	\$0.00	\$63,000.00	\$54.97

LCMS Northern Illinois District
Congregational Support
YTD January 31, 2019

REVISED CIRCUIT GROUPINGS EFFECTIVE JUNE 1, 2018

Other support consists of NSNB, District missions, gifts, & Synod

CIRCUIT	Congregation Name	City
---------	-------------------	------

2018 Fiscal Year-to-Date Through January 31, 2019				
# Comm Members	Unrestricted	Other	Total Support	Per Comm Member

6	Immanuel Lutheran Church	Elmhurst
6	Zion Lutheran Church	Hinsdale
6	Peace Lutheran Church	Lombard
6	Saint John's Lutheran Church	Lombard
6	Trinity Lutheran Church	Lombard
6	Trinity Lutheran Church	West Chicago
6	Bethel Lutheran Church	Westmont
6	Saint John Lutheran Church	Wheaton
6	Christ Our Savior Lutheran Church	Winfield
6 Total		

1,130	\$29,069.76	\$0.00	\$29,069.76	\$25.73
342	\$11,013.65	\$100.00	\$11,113.65	\$32.50
487	\$20,368.00	\$0.00	\$20,368.00	\$41.82
1,230	\$32,500.00	\$0.00	\$32,500.00	\$26.42
239	\$0.00	\$0.00	\$0.00	\$0.00
118	\$3,000.00	\$0.00	\$3,000.00	\$25.42
288	\$33,474.67	\$0.00	\$33,474.67	\$116.23
720	\$5,000.00	\$0.00	\$5,000.00	\$6.94
70	\$219.00	\$0.00	\$219.00	\$3.13
5,770	\$197,645.08	\$100.00	\$197,745.08	\$333.17

7	Emmanuel Lutheran Church	Aurora
7	Hope Lutheran Church	Aurora
7	New Song Lutheran Church	Aurora
7	Saint Paul Lutheran Church	Aurora
7	Iglesia Evangelica Luterana San Pablo	Aurora
7	Immanuel Lutheran Church	Batavia
7	Faith Lutheran Church	Geneva
7	Lord of Life Lutheran Church	LaFox
7	Saint Luke's Lutheran Church	Montgomery
7	Friends in Christ Lutheran Church	Morris
7	Zion Lutheran Church	Naperville
7	Saint Mark's Lutheran Church	Saint Charles
7	Cross Lutheran Church	Yorkville
7 Total		

114	\$2,052.12	\$0.00	\$2,052.12	\$18.00
44	\$0.00	\$1,300.00	\$1,300.00	\$29.55
143	\$0.00	\$0.00	\$0.00	\$0.00
651	\$0.00	\$0.00	\$0.00	\$0.00
131	\$0.00	\$0.00	\$0.00	\$0.00
1,735	\$71,687.28	\$0.00	\$71,687.28	\$41.32
56	\$0.00	\$0.00	\$0.00	\$0.00
350	\$2,600.00	\$500.00	\$3,100.00	\$8.86
477	\$29,373.47	\$0.00	\$29,373.47	\$61.58
171	\$4,000.00	\$0.00	\$4,000.00	\$23.39
256	\$10,347.19	\$0.00	\$10,347.19	\$40.42
909	\$12,000.00	\$0.00	\$12,000.00	\$13.20
879	\$0.00	\$100,677.44	\$100,677.44	\$114.54
5,916	\$132,060.06	\$102,477.44	\$234,537.50	\$350.85

8	Saint John Lutheran Church	Burlington
8	Immanuel Lutheran Church	DeKalb
8	Trinity Lutheran Church	Genoa
8	Trinity Lutheran Church	Hampshire
8	Saint Peter's Lutheran Church (North Plato	Hampshire
8	Immanuel Lutheran Church	Hinckley
8	Zion Lutheran Church	Marengo
8	Saint John Lutheran Church	Sycamore
8	Saint John's Lutheran Church	Union
8 Total		

307	\$0.00	\$0.00	\$0.00	\$0.00
318	\$1,000.00	\$0.00	\$1,000.00	\$3.14
549	\$10,500.00	\$0.00	\$10,500.00	\$19.13
103	\$0.00	\$0.00	\$0.00	\$0.00
325	\$0.00	\$0.00	\$0.00	\$0.00
220	\$12,675.00	\$0.00	\$12,675.00	\$57.61
1,200	\$30,100.00	\$0.00	\$30,100.00	\$25.08
612	\$14,891.04	\$0.00	\$14,891.04	\$24.33
634	\$23,600.00	\$500.00	\$24,100.00	\$38.01
4,268	\$92,766.04	\$500.00	\$93,266.04	\$167.31

9	Immanuel Lutheran Church	Belvidere
9	Immanuel Lutheran Church	Lindenwood
9	Concordia Lutheran Church	Machesney Park
9	Saint John Lutheran Church	Pecatonica
9	Christ the Rock Lutheran Church	Rockford
9	Mount Olive Lutheran Church	Rockford
9	Redeemer Lutheran Church	Rockford
9	Saint Paul Lutheran Church	Rockford
9	Rockford Lutheran Church for the Deaf	Rockford
9	Saint Andrew Lutheran Church	Rockton
9	Christ Our Savior Lutheran Church	Roscoe
9 Total		

1,786	\$16,500.00	\$400.00	\$16,900.00	\$9.46
123	\$7,400.00	\$17,000.00	\$24,400.00	\$198.37
192	\$0.00	\$0.00	\$0.00	\$0.00
221	\$7,772.00	\$0.00	\$7,772.00	\$35.17
385	\$31,432.51	\$0.00	\$31,432.51	\$81.64
358	\$25,000.00	\$0.00	\$25,000.00	\$69.83
336	\$15,000.00	\$0.00	\$15,000.00	\$44.64
811	\$10,950.00	\$0.00	\$10,950.00	\$13.50
12	\$0.00	\$0.00	\$0.00	\$0.00
287	\$11,910.01	\$0.00	\$11,910.01	\$41.50
50	\$0.00	\$0.00	\$0.00	\$0.00
4,561	\$125,964.52	\$17,400.00	\$143,364.52	\$494.12

10	Christ Our Savior Lutheran Church	Dixon
10	Saint Paul Lutheran Church	Elizabeth
10	Immanuel Lutheran Church	Freeport
10	Our Redeemer Lutheran Church	Freeport
10	Saint John's Lutheran Church	Lena
10	Saint Peter Lutheran Church	Morrison
10	Saint Paul Lutheran Church	Rochelle
10	Good Shepherd Lutheran Church	Rock Falls
10	Messiah Lutheran Church	Sterling
10	Our Savior Lutheran Church	Sterling
10	Holy Trinity Lutheran Church	Walnut
10 Total		

90	\$8,315.14	\$0.00	\$8,315.14	\$92.39
173	\$6,005.00	\$25.00	\$6,030.00	\$34.86
561	\$6,422.50	\$0.00	\$6,422.50	\$11.45
178	\$5,200.00	\$0.00	\$5,200.00	\$29.21
549	\$24,325.00	\$0.00	\$24,325.00	\$44.31
463	\$15,062.50	\$0.00	\$15,062.50	\$32.53
558	\$6,920.37	\$0.00	\$6,920.37	\$12.40
339	\$3,300.00	\$3,020.62	\$6,320.62	\$18.64
367	\$2,500.00	\$0.00	\$2,500.00	\$6.81
47	\$3,500.00	\$0.00	\$3,500.00	\$74.47
55	\$0.00	\$1,200.00	\$1,200.00	\$21.82
3,380	\$81,550.51	\$4,245.62	\$85,796.13	\$378.89

LCMS Northern Illinois District
Congregational Support
YTD January 31, 2019

REVISED CIRCUIT GROUPINGS EFFECTIVE JUNE 1, 2018

Other support consists of NSNB, District missions, gifts, & Synod

CIRCUIT	Congregation Name	City
---------	-------------------	------

2018 Fiscal Year-to-Date Through January 31, 2019				
# Comm Members	Unrestricted	Other	Total Support	Per Comm Member

	11 Messiah Lutheran Church	Chicago	111	\$0.00	\$0.00	\$0.00	\$0.00
	11 Our Saviour Lutheran Church	Chicago	71	\$0.00	\$0.00	\$0.00	\$0.00
	11 Saint John's Lutheran Church	Chicago	519	\$4,474.17	\$0.00	\$4,474.17	\$8.62
	11 Saint Paul Lutheran Church (Norwood Park)	Chicago	357	\$0.00	\$0.00	\$0.00	\$0.00
	11 Saint Philip Lutheran Church (N)	Chicago	200	\$0.00	\$0.00	\$0.00	\$0.00
	11 Tabor Lutheran Church	Chicago	45	\$0.00	\$1,000.00	\$1,000.00	\$22.22
	11 Trinity Lutheran Church (N)	Chicago	41	\$0.00	\$0.00	\$0.00	\$0.00
	11 Concordia Lutheran Church	Chicago	26	\$0.00	\$0.00	\$0.00	\$0.00
	11 Jehovah El Buen Pastor	Chicago	66	\$0.00	\$0.00	\$0.00	\$0.00
	11 Bethlehem Lutheran Church	Evanston	108	\$2,460.00	\$0.00	\$2,460.00	\$22.78
	11 Ascension Lutheran Church	Niles	106	\$1,000.00	\$0.00	\$1,000.00	\$9.43
	11 Saint Paul Lutheran Church	Skokie	294	\$16,752.41	\$0.00	\$16,752.41	\$56.98
11 Total			1,944	\$24,686.58	\$1,000.00	\$25,686.58	\$120.04
	12 Zion Lutheran Church	Bensenville	305	\$0.00	\$0.00	\$0.00	\$0.00
	12 Good Shepherd Our Redeemer Lutheran C	Berwyn	81	\$1,000.00	\$350.00	\$1,350.00	\$16.67
	12 Saint Paul Lutheran Church	Brookfield	331	\$300.00	\$0.00	\$300.00	\$0.91
	12 Saint Paul Lutheran Church (Austin)	Chicago	156	\$0.00	\$0.00	\$0.00	\$0.00
	12 Faith Lutheran Church	Cicero	46	\$0.00	\$0.00	\$0.00	\$0.00
	12 Saint John Lutheran Church	Forest Park	340	\$18,057.00	\$0.00	\$18,057.00	\$53.11
	12 Mount Calvary Lutheran Church	Franklin Park	35	\$0.00	\$0.00	\$0.00	\$0.00
	12 Hope Lutheran Church	Hillside	111	\$1,200.00	\$0.00	\$1,200.00	\$10.81
	12 Immanuel Lutheran Church	Hillside	208	\$1,800.00	\$0.00	\$1,800.00	\$8.65
	12 Saint John's Lutheran Church	La Grange	801	\$18,430.17	\$0.00	\$18,430.17	\$23.01
	12 Apostles Lutheran Church	Melrose Park	113	\$0.00	\$0.00	\$0.00	\$0.00
	12 Saint Paul Lutheran Church	Melrose Park	217	\$11,970.90	\$0.00	\$11,970.90	\$55.17
	12 Bethlehem Lutheran Church	River Grove	171	\$0.00	\$0.00	\$0.00	\$0.00
	12 Faith Lutheran Church	Westchester	-	\$0.00	\$0.00	\$0.00	\$0.00
12 Total			2,915	\$52,758.07	\$350.00	\$53,108.07	\$168.32
	13 Holy Trinity Lutheran Church	Burbank	97	\$0.00	\$0.00	\$0.00	\$0.00
	13 Gloria Dei Lutheran Church	Chicago	178	\$0.00	\$0.00	\$0.00	\$0.00
	13 Holy Cross Lutheran Church	Chicago	176	\$200.00	\$0.00	\$200.00	\$1.14
	13 Mount Greenwood Lutheran Church	Chicago	76	\$207.05	\$0.00	\$207.05	\$2.72
	13 Saint Peter Lutheran Church	Chicago	72	\$794.40	\$0.00	\$794.40	\$11.03
	13 Hope Lutheran Church	Countryside	53	\$250.00	\$0.00	\$250.00	\$4.72
	13 Immanuel Lutheran Church	Hodgkins	82	\$0.00	\$0.00	\$0.00	\$0.00
	13 Zion Lutheran Church	Lyons	80	\$0.00	\$330.00	\$330.00	\$4.13
	13 Faith Lutheran Church	Oak Lawn	125	\$2,350.00	\$0.00	\$2,350.00	\$18.80
	13 Saint Paul Lutheran Church	Oak Lawn	484	\$15,761.95	\$0.00	\$15,761.95	\$32.57
	13 Zion Lutheran Church	Oak Lawn	158	\$1,000.00	\$0.00	\$1,000.00	\$6.33
	13 Zion Lutheran Church	Summit	115	\$0.00	\$0.00	\$0.00	\$0.00
	13 Grace Lutheran Church	Western Springs	146	\$3,000.00	\$0.00	\$3,000.00	\$20.55
	13 Grace Lutheran Church	Willow Springs	109	\$0.00	\$0.00	\$0.00	\$0.00
13 Total			1,951	\$23,563.40	\$330.00	\$23,893.40	\$101.98
	14 Salem Lutheran Church	Blue Island	114	\$2,000.00	\$0.00	\$2,000.00	\$17.54
	14 Mount Calvary Lutheran Church	Calumet Park	53	\$1,200.00	\$0.00	\$1,200.00	\$22.64
	14 First Bethlehem Lutheran Church	Chicago	53	\$1,569.00	\$10,000.00	\$11,569.00	\$218.28
	14 First Saint Paul's Lutheran Church	Chicago	259	\$6,600.00	\$0.00	\$6,600.00	\$25.48
	14 Grace Lutheran Church	Chicago	115	\$0.00	\$0.00	\$0.00	\$0.00
	14 Saint James Lutheran Church	Chicago	677	\$1,875.00	\$0.00	\$1,875.00	\$2.77
	14 Saint Matthew Lutheran Church	Chicago	56	\$0.00	\$1,000.00	\$1,000.00	\$17.86
	14 Saint Paul Lutheran Church (S)	Chicago	75	\$600.00	\$0.00	\$600.00	\$8.00
	14 Christ the King Lutheran Church	Chicago	106	\$0.00	\$0.00	\$0.00	\$0.00
	14 Resurrection Lutheran Church	Chicago	166	\$1,200.00	\$0.00	\$1,200.00	\$7.23
	14 Saint Philip Lutheran Church (S)	Chicago	100	\$0.00	\$0.00	\$0.00	\$0.00
	14 Saint Stephen Lutheran Church	Chicago	30	\$0.00	\$150.00	\$150.00	\$5.00
	14 Zion Lutheran Church	Chicago	91	\$0.00	\$0.00	\$0.00	\$0.00
	14 Good Shepherd Lutheran Church	South Holland	231	\$2,500.00	\$650.00	\$3,150.00	\$13.64
14 Total			2,126	\$17,544.00	\$11,800.00	\$29,344.00	\$338.44

LCMS Northern Illinois District
Congregational Support
YTD January 31, 2019

REVISED CIRCUIT GROUPINGS EFFECTIVE JUNE 1, 2018

Other support consists of NSNB, District missions, gifts, & Synod

CIRCUIT	Congregation Name	City
---------	-------------------	------

2018 Fiscal Year-to-Date Through January 31, 2019				
# Comm Members	Unrestricted	Other	Total Support	Per Comm Member

	15 Divine Shepherd Lutheran Church	Bolingbrook	169	\$300.00	\$0.00	\$300.00	\$1.78
	15 Trinity Lutheran Church	Burr Ridge	859	\$18,000.00	\$0.00	\$18,000.00	\$20.95
	15 Saint John Lutheran Church	Darien	363	\$12,750.00	\$0.00	\$12,750.00	\$35.12
	15 Saint Matthew Lutheran Church	Lemont	348	\$3,000.00	\$0.00	\$3,000.00	\$8.62
	15 Trinity Lutheran Church	Lisle	1,192	\$0.00	\$39,000.02	\$39,000.02	\$32.72
	15 Bethany Lutheran Church	Naperville	1,366	\$13,000.00	\$0.00	\$13,000.00	\$9.52
	15 Word of Life Lutheran Church	Naperville	118	\$2,858.48	\$0.00	\$2,858.48	\$24.22
	15 Peace Lutheran Church	Plainfield	231	\$12,000.00	\$0.00	\$12,000.00	\$51.95
15 Total			4,646	\$61,908.48	\$39,000.02	\$100,908.50	\$184.88
	16 Saint John's Lutheran Church	Country Club Hills	193	\$0.00	\$0.00	\$0.00	\$0.00
	16 Good Shepherd Lutheran Church	Frankfort	344	\$8,875.00	\$0.00	\$8,875.00	\$25.80
	16 Salem Lutheran Church	Homewood	429	\$6,000.00	\$0.00	\$6,000.00	\$13.99
	16 Saint Paul Lutheran Church	Matteson	538	\$16,846.98	\$0.00	\$16,846.98	\$31.31
	16 Immanuel Lutheran Church	Mokena	662	\$0.00	\$11,000.00	\$11,000.00	\$16.62
	16 Living Word Lutheran Church	Orland Park	158	\$548.00	\$2,000.00	\$2,548.00	\$16.13
	16 Christ Lutheran Church	Orland Park	1,729	\$24,960.00	\$0.00	\$24,960.00	\$14.44
	16 Immanuel Lutheran Church	Richton Park	173	\$0.00	\$2,585.00	\$2,585.00	\$14.94
	16 Trinity Lutheran Church	Tinley Park	1,123	\$29,671.00	\$0.00	\$29,671.00	\$26.42
16 Total			5,349	\$86,900.98	\$15,585.00	\$102,485.98	\$159.64
	17 River of Life Lutheran Church	Channahon	93	\$0.00	\$0.00	\$0.00	\$0.00
	17 Our Savior Lutheran Church	Joliet	709	\$14,640.38	\$0.00	\$14,640.38	\$20.65
	17 Saint Peter Lutheran Church	Joliet	318	\$6,794.92	\$0.00	\$6,794.92	\$21.37
	17 Saint Paul Lutheran Church	Lockport	178	\$262.50	\$0.00	\$262.50	\$1.47
	17 Trinity Lutheran Church	Marseilles	60	\$0.00	\$0.00	\$0.00	\$0.00
	17 Zion Lutheran Church	Ottawa	181	\$2,708.29	\$3,921.00	\$6,629.29	\$36.63
	17 Living Heritage Lutheran Church	Plano	35	\$0.00	\$0.00	\$0.00	\$0.00
	17 Lord of Life Lutheran Church (Millbrook)	Serena	37	\$1,000.00	\$0.00	\$1,000.00	\$27.03
	17 Hope Lutheran Church	Shorewood	505	\$1,259.78	\$0.00	\$1,259.78	\$2.49
17 Total			2,116	\$26,665.87	\$3,921.00	\$30,586.87	\$109.64
	18 Zion Lutheran Church	Bonfield	98	\$8,898.00	\$0.00	\$8,898.00	\$90.80
	18 Good Shepherd Lutheran Church	Bourbonnais	50	\$0.00	\$0.00	\$0.00	\$0.00
	18 Saint Paul's Lutheran Church	Bourbonnais	1,322	\$9,375.00	\$254.50	\$9,629.50	\$7.28
	18 Zion Lutheran Church	Chebanse	442	\$3,300.00	\$0.00	\$3,300.00	\$7.47
	18 Emmanuel Lutheran Church	Dwight	166	\$0.00	\$0.00	\$0.00	\$0.00
	18 Trinity Lutheran Church	Dwight	79	\$500.00	\$0.00	\$500.00	\$6.33
	18 Zion Lutheran Church	Grant Park	351	\$13,197.50	\$0.00	\$13,197.50	\$37.60
	18 Trinity Lutheran Church	Herscher	393	\$14,954.00	\$0.00	\$14,954.00	\$38.05
	18 Risen Savior Lutheran Church	Manteno	151	\$10,821.33	\$0.00	\$10,821.33	\$71.66
	18 Our Savior Lutheran Church	Momence	120	\$200.00	\$0.00	\$200.00	\$1.67
18 Total			3,172	\$61,245.83	\$254.50	\$61,500.33	\$260.86
	19 Saint Paul Lutheran Church	Beecher	181	\$2,256.65	\$0.00	\$2,256.65	\$12.47
	19 Zion Lutheran Church	Beecher	714	\$6,250.00	\$0.00	\$6,250.00	\$8.75
	19 Saint John Lutheran Church	Beecher	260	\$9,298.00	\$0.00	\$9,298.00	\$35.76
	19 Saint Paul's Lutheran Church	Chicago Heights	507	\$468.02	\$0.00	\$468.02	\$0.92
	19 Saint John's Lutheran Church	Lansing	277	\$0.00	\$0.00	\$0.00	\$0.00
	19 Trinity Lutheran Church	Lansing	397	\$4,626.59	\$0.00	\$4,626.59	\$11.65
	19 Immanuel Lutheran Church	Steger	117	\$0.00	\$0.00	\$0.00	\$0.00
	19 Saint Paul Lutheran Church	Thornton	227	\$4,795.00	\$0.00	\$4,795.00	\$21.12
19 Total			2,680	\$27,694.26	\$0.00	\$27,694.26	\$90.68
Total 203 Active Congregations			76,934	\$1,535,917.02	\$291,062.58	\$1,826,979.60	\$23.75
<i>Closed prior to 2018 and inactive</i>			135	\$400.00		\$400.00	
Grand Total			77,069	\$1,536,317.02	\$291,062.58	\$1,827,379.60	\$23.71

2022 Convention Report: Congregational Giving YTD January 2020

LCMS Northern Illinois District
Congregational Support
YTD January 31, 2020

REVISED CIRCUIT GROUPINGS EFFECTIVE JUNE 1, 2018

Other support consists of NSNB, District missions, gifts, & Synod

			2019 Fiscal Year-to-Date Through January 31, 2020				
CIRCUIT	Congregation Name	City	# Comm Members	Unrestricted	Other	Total Support	Per Comm Member
1	Beautiful Savior Lutheran Church	Antioch	72	\$12,616.00	\$0.00	\$12,616.00	\$175.22
	Immanuel Lutheran Church	Glenview	180	\$0.00	\$13,200.00	\$13,200.00	\$73.33
	Lord of Glory Lutheran Church	Grayslake	520	\$5,000.00	\$1,250.00	\$6,250.00	\$12.02
	Bethel Lutheran Church	Gurnee	397	\$13,000.00	\$0.00	\$13,000.00	\$32.75
	Saint Matthew Lutheran Church	Hawthorn Woods	1,222	\$7,848.14	\$0.00	\$7,848.14	\$6.42
	North Shore/Faith Lutheran Church	Lake Forest	342	\$11,000.00	\$0.00	\$11,000.00	\$32.16
	Good Shepherd Lutheran Church	Lake Villa	55	\$400.00	\$0.00	\$400.00	\$7.27
	Saint John Lutheran Church	Northbrook	23	\$1,250.00	\$0.00	\$1,250.00	\$54.35
	Grace Lutheran Church	Northbrook	170	\$1,000.00	\$0.00	\$1,000.00	\$5.88
	Community of Faith Lutheran Church	Spring Grove	61	\$0.00	\$0.00	\$0.00	\$0.00
	Prince of Peace Lutheran Church	Waukegan	136	\$0.00	\$0.00	\$0.00	\$0.00
	Redeemer Lutheran Church	Waukegan	126	\$3,500.00	\$0.00	\$3,500.00	\$27.78
	1 Total		3,304	\$55,614.14	\$14,450.00	\$70,064.14	\$427.19
2	Living Christ Lutheran Church	Arlington Heights	116	\$8,000.00	\$0.00	\$8,000.00	\$68.97
	Good Shepherd Lutheran Church	Des Plaines	90	\$5,000.00	\$0.00	\$5,000.00	\$55.56
	Immanuel Lutheran Church	Des Plaines	185	\$16,000.00	\$0.00	\$16,000.00	\$86.49
	Saint Luke Lutheran Church	Itasca	508	\$6,885.00	\$0.00	\$6,885.00	\$13.55
	Saint John Lutheran Church	Mount Prospect	254	\$825.00	\$0.00	\$825.00	\$3.25
	Saint Paul Lutheran Church	Mount Prospect	1,491	\$50,000.00	\$0.00	\$50,000.00	\$33.53
	Immanuel Lutheran Church	Palatine	1,274	\$5,473.00	\$0.00	\$5,473.00	\$4.30
	Prince of Peace Lutheran Church	Palatine	961	\$43,000.00	\$0.00	\$43,000.00	\$44.75
	Saint Andrews Lutheran Church	Park Ridge	460	\$11,175.00	\$80.00	\$11,255.00	\$24.47
	Our Redeemer Lutheran Church	Prospect Heights	106	\$1,650.00	\$0.00	\$1,650.00	\$15.57
	Calvary Lutheran Church	Wood Dale	60	\$0.00	\$2,000.00	\$2,000.00	\$33.33
	2 Total		5,505	\$148,008.00	\$2,080.00	\$150,088.00	\$383.75
3	Saint Matthew Lutheran Church	Barrington	260	\$25,175.00	\$0.00	\$25,175.00	\$96.83
	Faith Lutheran Church	Carpentersville	46	\$260.00	\$0.00	\$260.00	\$5.65
	Saint Peter Lutheran Church	Dundee	450	\$6,500.00	\$0.00	\$6,500.00	\$14.44
	Immanuel Lutheran Church	East Dundee	1,665	\$44,027.84	\$0.00	\$44,027.84	\$26.44
	Calvary Lutheran Church	Elgin	266	\$0.00	\$5,600.00	\$5,600.00	\$21.05
	Good Shepherd Lutheran Church	Elgin	1,014	\$12,000.00	\$0.00	\$12,000.00	\$11.83
	King of Glory Lutheran Church	Elgin	185	\$13,866.43	\$0.00	\$13,866.43	\$74.95
	Saint John's Lutheran Church	Elgin	959	\$4,800.00	\$0.00	\$4,800.00	\$5.01
	Bethlehem Lutheran Church	West Dundee	275	\$8,000.00	\$0.00	\$8,000.00	\$29.09
	3 Total		5,120	\$114,629.27	\$5,600.00	\$120,229.27	\$285.30
4	Saint John's Lutheran Church	Algonquin	525	\$4,600.00	\$0.00	\$4,600.00	\$8.76
	Holy Cross Lutheran Church	Cary	461	\$2,029.00	\$380.00	\$2,409.00	\$5.23
	Immanuel Lutheran Church	Crystal Lake	1,188	\$23,972.77	\$0.00	\$23,972.77	\$20.18
	Prince of Peace Lutheran Church	Crystal Lake	414	\$1,916.66	\$0.00	\$1,916.66	\$4.63
	Saint Paul Lutheran Church	Harvard	250	\$5,731.00	\$0.00	\$5,731.00	\$22.92
	Trinity Lutheran Church	Huntley	282	\$4,378.14	\$0.00	\$4,378.14	\$15.53
	Saint John Lutheran Church	Island Lake	128	\$1,168.00	\$0.00	\$1,168.00	\$9.13
	Fellowship of Faith Lutheran Church	McHenry	205	\$12,220.00	\$0.00	\$12,220.00	\$59.61
	Zion Lutheran Church	McHenry	471	\$5,520.10	\$0.00	\$5,520.10	\$11.72
	Saint John's Lutheran Church	Woodstock	403	\$5,367.44	\$0.00	\$5,367.44	\$13.32
	4 Total		4,327	\$66,903.11	\$380.00	\$67,283.11	\$171.02
	Saint Paul Lutheran Church	Addison	252	\$6,446.82	\$0.00	\$6,446.82	\$25.58
	Saint Peter Lutheran Church	Arlington Heights	1,473	\$63,999.70	\$0.00	\$63,999.70	\$43.45
	Immanuel Lutheran Church	Bartlett	61	\$2,000.00	\$0.00	\$2,000.00	\$32.79
	Our Savior Lutheran Church	Carol Stream	576	\$39,510.83	\$0.00	\$39,510.83	\$68.60
	Family in Faith Lutheran Church	Glendale Heights	70	\$2,557.36	\$0.00	\$2,557.36	\$36.53
	Trinity Lutheran Church	Roselle	3,236	\$0.00	\$46,200.00	\$46,200.00	\$14.28
	Saint John Lutheran Church	Schaumburg	160	\$0.00	\$4,587.00	\$4,587.00	\$28.67
	Saint Peter Lutheran Church	Schaumburg	1,322	\$2,000.00	\$0.00	\$2,000.00	\$1.51
	Grace Lutheran Church	Streamwood	237	\$3,029.43	\$0.00	\$3,029.43	\$12.78
	5 Total		7,387	\$119,544.14	\$50,787.00	\$170,331.14	\$264.19
6	Immanuel Lutheran Church	Downers Grove	1,146	\$60,867.00	\$0.00	\$60,867.00	\$53.11

LCMS Northern Illinois District
 Congregational Support
 YTD January 31, 2020

REVISED CIRCUIT GROUPINGS EFFECTIVE JUNE 1, 2018

Other support consists of NSNB, District missions, gifts, & Synod

			2019 Fiscal Year-to-Date Through January 31, 2020			
CIRCUIT	Congregation Name	City	# Comm Members	Unrestricted	Other	Per Comm Member
	6 Immanuel Lutheran Church	Elmhurst	960	\$27,028.24	\$0.00	\$28.15
	6 Zion Lutheran Church	Hinsdale	347	\$12,763.16	\$0.00	\$36.78
	6 Peace Lutheran Church	Lombard	605	\$12,929.00	\$0.00	\$21.37
	6 Saint John's Lutheran Church	Lombard	1,230	\$24,168.00	\$0.00	\$19.65
	6 Trinity Lutheran Church	Lombard	248	\$0.00	\$0.00	\$0.00
	6 Trinity Lutheran Church	West Chicago	118	\$3,000.00	\$0.00	\$25.42
	6 Bethel Lutheran Church	Westmont	283	\$29,306.65	\$0.00	\$103.56
	6 Saint John Lutheran Church	Wheaton	760	\$5,000.00	\$0.00	\$6.58
	6 Christ Our Savior Lutheran Church	Winfield	70	\$288.00	\$0.00	\$4.11
6 Total			5,767	\$175,350.05	\$0.00	\$298.74
	7 Emmanuel Lutheran Church	Aurora	109	\$0.00	\$0.00	\$0.00
	7 Hope Lutheran Church	Aurora	44	\$0.00	\$0.00	\$0.00
	7 New Song Lutheran Church	Aurora	143	\$0.00	\$0.00	\$0.00
	7 Saint Paul Lutheran Church	Aurora	701	\$0.00	\$5,000.00	\$7.13
	7 Iglesia Evangelica Luterana San Pablo	Aurora	131	\$0.00	\$0.00	\$0.00
	7 Immanuel Lutheran Church	Batavia	1,760	\$82,689.68	\$0.00	\$46.98
	7 Faith Lutheran Church	Geneva	42	\$0.00	\$0.00	\$0.00
	7 Lord of Life Lutheran Church	LaFox	350	\$2,600.00	\$2,000.00	\$13.14
	7 Saint Luke's Lutheran Church	Montgomery	477	\$16,456.75	\$0.00	\$34.50
	7 Friends in Christ Lutheran Church	Morris	167	\$4,000.00	\$0.00	\$23.95
	7 Zion Lutheran Church	Naperville	251	\$10,000.00	\$0.00	\$39.84
	7 Saint Mark's Lutheran Church	Saint Charles	810	\$12,000.00	\$0.00	\$14.81
	7 Cross Lutheran Church	Yorkville	874	\$0.00	\$106,463.06	\$121.81
7 Total			5,859	\$127,746.43	\$113,463.06	\$302.18
	8 Saint John Lutheran Church	Burlington	307	\$0.00	\$0.00	\$0.00
	8 Immanuel Lutheran Church	DeKalb	355	\$1,833.31	\$0.00	\$5.16
	8 Trinity Lutheran Church	Genoa	544	\$10,500.00	\$0.00	\$19.30
	8 Trinity Lutheran Church	Hampshire	100	\$1,000.00	\$0.00	\$10.00
	8 Saint Peter's Lutheran Church (North Plato	Hampshire	325	\$0.00	\$0.00	\$0.00
	8 Immanuel Lutheran Church	Hinckley	220	\$10,725.00	\$0.00	\$48.75
	8 Zion Lutheran Church	Marengo	1,412	\$29,550.00	\$0.00	\$20.93
	8 Saint John Lutheran Church	Sycamore	613	\$16,637.95	\$0.00	\$27.14
	8 Saint John's Lutheran Church	Union	630	\$24,735.00	\$0.00	\$39.26
8 Total			4,506	\$94,981.26	\$0.00	\$170.55
	9 Immanuel Lutheran Church	Belvidere	1,828	\$16,500.00	\$5,000.00	\$11.76
	9 Immanuel Lutheran Church	Lindenwood	67	\$7,400.00	\$0.00	\$110.45
	9 Concordia Lutheran Church	Machesney Park	186	\$1,000.00	\$0.00	\$5.38
	9 Saint John Lutheran Church	Pecatonica	225	\$11,182.00	\$0.00	\$49.70
	9 Christ the Rock Lutheran Church	Rockford	282	\$39,290.03	\$0.00	\$139.33
	9 Mount Olive Lutheran Church	Rockford	343	\$24,999.96	\$0.00	\$72.89
	9 Redeemer Lutheran Church	Rockford	336	\$11,250.00	\$0.00	\$33.48
	9 Saint Paul Lutheran Church	Rockford	217	\$3,750.00	\$0.00	\$17.28
	9 Rockford Lutheran Church for the Deaf	Rockford	12	\$0.00	\$0.00	\$0.00
	9 Saint Andrew Lutheran Church	Rockton	287	\$16,248.01	\$0.00	\$56.61
	9 Christ Our Savior Lutheran Church	Roscoe	58	\$0.00	\$0.00	\$0.00
9 Total			3,841	\$131,620.00	\$5,000.00	\$496.87
	10 Christ Our Savior Lutheran Church	Dixon	85	\$8,258.20	\$0.00	\$97.16
	10 Saint Paul Lutheran Church	Elizabeth	173	\$6,000.00	\$0.00	\$34.68
	10 Immanuel Lutheran Church	Freeport	561	\$6,486.83	\$0.00	\$11.56
	10 Our Redeemer Lutheran Church	Freeport	168	\$5,200.00	\$0.00	\$30.95
	10 Saint John's Lutheran Church	Lena	552	\$24,600.00	\$0.00	\$44.57
	10 Saint Peter Lutheran Church	Morrison	468	\$15,750.00	\$0.00	\$33.65
	10 Saint Paul Lutheran Church	Rochelle	558	\$7,646.00	\$0.00	\$13.70
	10 Good Shepherd Lutheran Church	Rock Falls	339	\$3,300.00	\$3,281.21	\$19.41
	10 Messiah Lutheran Church	Sterling	329	\$2,500.00	\$202.65	\$8.21
	10 Our Savior Lutheran Church	Sterling	47	\$3,600.00	\$0.00	\$76.60
	10 Holy Trinity Lutheran Church	Walnut	55	\$0.00	\$1,080.00	\$19.64
10 Total			3,335	\$83,341.03	\$4,563.86	\$390.13

LCMS Northern Illinois District
Congregational Support
YTD January 31, 2020

REVISED CIRCUIT GROUPINGS EFFECTIVE JUNE 1, 2018

Other support consists of NSNB, District missions, gifts, & Synod

			2019 Fiscal Year-to-Date Through January 31, 2020			
CIRCUIT	Congregation Name	City	# Comm Members	Unrestricted	Other	Per Comm Member
					Total Support	
	11 Messiah Lutheran Church	Chicago	103	\$10,000.00	\$0.00	\$97.09
	11 Our Saviour Lutheran Church	Chicago	71	\$0.00	\$0.00	\$0.00
	11 Saint John's Lutheran Church	Chicago	498	\$3,221.00	\$0.00	\$6.47
	11 Saint Paul Lutheran Church (Norwood Park	Chicago	357	\$0.00	\$0.00	\$0.00
	11 Saint Philip Lutheran Church (N)	Chicago	200	\$0.00	\$0.00	\$0.00
	11 Tabor Lutheran Church	Chicago	42	\$0.00	\$3,000.00	\$71.43
	11 Trinity Lutheran Church (N)	Chicago	41	\$0.00	\$0.00	\$0.00
	11 Concordia Lutheran Church	Chicago	27	\$0.00	\$0.00	\$0.00
	11 Jehovah El Buen Pastor	Chicago	58	\$0.00	\$0.00	\$0.00
	11 Bethlehem Lutheran Church	Evanston	102	\$0.00	\$0.00	\$0.00
	11 Ascension Lutheran Church	Niles	107	\$250.00	\$0.00	\$2.34
	11 Saint Paul Lutheran Church	Skokie	295	\$15,597.15	\$0.00	\$52.87
11 Total			1,901	\$29,068.15	\$3,000.00	\$230.19
	12 Zion Lutheran Church	Bensenville	285	\$0.00	\$0.00	\$0.00
	12 Good Shepherd Our Redeemer Lutheran C	Berwyn	81	\$1,000.00	\$425.00	\$17.59
	12 Saint Paul Lutheran Church	Brookfield	270	\$0.00	\$0.00	\$0.00
	12 Saint Paul Lutheran Church (Austin)	Chicago	151	\$0.00	\$0.00	\$0.00
	12 Faith Lutheran Church	Cicero	46	\$0.00	\$0.00	\$0.00
	12 Saint John Lutheran Church	Forest Park	285	\$23,251.00	\$0.00	\$81.58
	12 Mount Calvary Lutheran Church	Franklin Park	33	\$0.00	\$0.00	\$0.00
	12 Hope Lutheran Church	Hillside	108	\$1,200.00	\$0.00	\$11.11
	12 Immanuel Lutheran Church	Hillside	213	\$1,680.00	\$0.00	\$7.89
	12 Saint John's Lutheran Church	La Grange	800	\$19,662.01	\$0.00	\$24.58
	12 Apostles Lutheran Church	Melrose Park	122	\$1,200.00	\$0.00	\$9.84
	12 Saint Paul Lutheran Church	Melrose Park	217	\$6,000.00	\$0.00	\$27.65
	12 Bethlehem Lutheran Church	River Grove	171	\$1,000.00	\$0.00	\$5.85
	12 Faith Lutheran Church	Westchester	-	\$0.00	\$0.00	\$0.00
12 Total			2,782	\$54,993.01	\$425.00	\$186.08
	13 Holy Trinity Lutheran Church	Burbank	111	\$0.00	\$0.00	\$0.00
	13 Gloria Dei Lutheran Church	Chicago	171	\$0.00	\$0.00	\$0.00
	13 Holy Cross Lutheran Church	Chicago	97	\$0.00	\$0.00	\$0.00
	13 Mount Greenwood Lutheran Church	Chicago	52	\$246.63	\$0.00	\$4.74
	13 Saint Peter Lutheran Church	Chicago	63	\$1,168.00	\$0.00	\$18.54
	13 Hope Lutheran Church	Countryside	52	\$250.00	\$0.00	\$4.81
	13 Immanuel Lutheran Church	Hodgkins	82	\$0.00	\$0.00	\$0.00
	13 Zion Lutheran Church	Lyons	83	\$0.00	\$265.00	\$3.19
	13 Faith Lutheran Church	Oak Lawn	125	\$1,750.00	\$0.00	\$14.00
	13 Saint Paul Lutheran Church	Oak Lawn	419	\$10,000.00	\$0.00	\$23.87
	13 Zion Lutheran Church	Oak Lawn	158	\$1,000.00	\$0.00	\$6.33
	13 Zion Lutheran Church	Summit	115	\$0.00	\$0.00	\$0.00
	13 Grace Lutheran Church	Western Springs	146	\$3,500.00	\$0.00	\$23.97
	13 Grace Lutheran Church	Willow Springs	109	\$0.00	\$0.00	\$0.00
13 Total			1,783	\$17,914.63	\$265.00	\$99.45
	14 Salem Lutheran Church	Blue Island	109	\$985.60	\$0.00	\$9.04
	14 Mount Calvary Lutheran Church	Calumet Park	50	\$1,500.00	\$0.00	\$30.00
	14 First Bethlehem Lutheran Church	Chicago	52	\$1,800.00	\$0.00	\$34.62
	14 First Saint Paul's Lutheran Church	Chicago	207	\$6,800.00	\$100.00	\$33.33
	14 Grace Lutheran Church	Chicago	115	\$0.00	\$0.00	\$0.00
	14 Saint James Lutheran Church	Chicago	677	\$6,041.69	\$0.00	\$8.92
	14 Saint Matthew Lutheran Church	Chicago	67	\$0.00	\$0.00	\$0.00
	14 Saint Paul Lutheran Church (S)	Chicago	60	\$0.00	\$0.00	\$0.00
	14 Christ the King Lutheran Church	Chicago	103	\$0.00	\$0.00	\$0.00
	14 Resurrection Lutheran Church	Chicago	160	\$1,200.00	\$0.00	\$7.50
	14 Saint Philip Lutheran Church (S)	Chicago	100	\$0.00	\$0.00	\$0.00
	14 Saint Stephen Lutheran Church	Chicago	30	\$0.00	\$0.00	\$0.00
	14 Zion Lutheran Church	Chicago	91	\$0.00	\$0.00	\$0.00
	14 Good Shepherd Lutheran Church	South Holland	231	\$2,500.00	\$0.00	\$10.82
14 Total			2,052	\$20,827.29	\$100.00	\$134.24

LCMS Northern Illinois District
 Congregational Support
 YTD January 31, 2020

REVISED CIRCUIT GROUPINGS EFFECTIVE JUNE 1, 2018

Other support consists of NSNB, District missions, gifts, & Synod

CIRCUIT	Congregation Name	City	2019 Fiscal Year-to-Date Through January 31, 2020			
			# Comm Members	Unrestricted	Other	Per Comm Member
	15 Divine Shepherd Lutheran Church	Bolingbrook	170	\$150.00	\$0.00	\$0.88
	15 Trinity Lutheran Church	Burr Ridge	859	\$22,000.00	\$0.00	\$25.61
	15 Saint John Lutheran Church	Darien	338	\$8,000.00	\$0.00	\$23.67
	15 Saint Matthew Lutheran Church	Lemont	354	\$9,000.00	\$0.00	\$25.42
	15 Trinity Lutheran Church	Lisle	1,149	\$0.00	\$39,000.04	\$33.94
	15 Bethany Lutheran Church	Naperville	1,295	\$14,240.00	\$0.00	\$11.00
	15 Word of Life Lutheran Church	Naperville	103	\$1,157.33	\$0.00	\$11.24
	15 Peace Lutheran Church	Plainfield	224	\$12,000.00	\$0.00	\$53.57
15 Total			4,492	\$66,547.33	\$39,000.04	\$185.33
	16 Saint John's Lutheran Church	Country Club Hills	201	\$0.00	\$0.00	\$0.00
	16 Good Shepherd Lutheran Church	Frankfort	344	\$3,750.00	\$0.00	\$10.90
	16 Salem Lutheran Church	Homewood	420	\$6,000.00	\$0.00	\$14.29
	16 Saint Paul Lutheran Church	Matteson	538	\$18,365.90	\$0.00	\$34.14
	16 Immanuel Lutheran Church	Mokena	517	\$13,000.00	\$0.00	\$25.15
	16 Living Word Lutheran Church	Orland Park	158	\$0.00	\$0.00	\$0.00
	16 Christ Lutheran Church	Orland Park	1,751	\$21,120.00	\$0.00	\$12.06
	16 Immanuel Lutheran Church	Richton Park	87	\$0.00	\$2,395.00	\$27.53
	16 Trinity Lutheran Church	Tinley Park	1,156	\$24,000.00	\$0.00	\$20.76
16 Total			5,172	\$86,235.90	\$2,395.00	\$144.82
	17 River of Life Lutheran Church	Channahon	93	\$0.00	\$0.00	\$0.00
	17 Our Savior Lutheran Church	Joliet	782	\$6,320.09	\$0.00	\$8.08
	17 Saint Peter Lutheran Church	Joliet	318	\$5,305.98	\$0.00	\$16.69
	17 Saint Paul Lutheran Church	Lockport	167	\$1,000.00	\$0.00	\$5.99
	17 Trinity Lutheran Church	Marseilles	61	\$0.00	\$0.00	\$0.00
	17 Zion Lutheran Church	Ottawa	185	\$2,291.63	\$2,215.68	\$24.36
	17 Living Heritage Lutheran Church	Plano	35	\$500.00	\$0.00	\$14.29
	17 Lord of Life Lutheran Church (Millbrook)	Serena	37	\$1,000.00	\$0.00	\$27.03
	17 Hope Lutheran Church	Shorewood	505	\$1,000.00	\$0.00	\$1.98
17 Total			2,183	\$17,417.70	\$2,215.68	\$98.41
	18 Zion Lutheran Church	Bonfield	95	\$9,350.00	\$125.00	\$99.74
	18 Good Shepherd Lutheran Church	Bourbonnais	50	\$100.00	\$0.00	\$2.00
	18 Saint Paul's Lutheran Church	Bourbonnais	1,322	\$0.00	\$0.00	\$0.00
	18 Zion Lutheran Church	Chebanse	442	\$3,300.00	\$0.00	\$7.47
	18 Emmanuel Lutheran Church	Dwight	162	\$0.00	\$200.00	\$1.23
	18 Trinity Lutheran Church	Dwight	74	\$200.00	\$300.00	\$6.76
	18 Zion Lutheran Church	Grant Park	345	\$12,000.00	\$0.00	\$34.78
	18 Trinity Lutheran Church	Herscher	389	\$15,000.00	\$0.00	\$38.56
	18 Risen Savior Lutheran Church	Manteno	140	\$9,432.51	\$0.00	\$67.38
	18 Our Savior Lutheran Church	Momence	114	\$600.00	\$0.00	\$5.26
18 Total			3,133	\$49,982.51	\$625.00	\$263.18
	19 Saint Paul Lutheran Church	Beecher	174	\$1,771.00	\$0.00	\$10.18
	19 Zion Lutheran Church	Beecher	687	\$3,600.00	\$0.00	\$5.24
	19 Saint John Lutheran Church	Beecher	262	\$9,805.00	\$0.00	\$37.42
	19 Saint Paul's Lutheran Church	Chicago Heights	378	\$528.74	\$0.00	\$1.40
	19 Saint John's Lutheran Church	Lansing	218	\$0.00	\$0.00	\$0.00
	19 Trinity Lutheran Church	Lansing	351	\$6,300.00	\$0.00	\$17.95
	19 Immanuel Lutheran Church	Steger	125	\$1,000.00	\$0.00	\$8.00
	19 Saint Paul Lutheran Church	Thornton	225	\$2,809.50	\$356.00	\$14.07
19 Total			2,420	\$25,814.24	\$356.00	\$94.26
Total 203 Active Congregations			74,869	\$1,486,538.19	\$244,705.64	\$23.12
Closed prior to 2018 and inactive			42			
Grand Total			74,911	\$1,486,538.19	\$244,705.64	\$23.11

2022 Convention Report: Congregational Giving YTD January 2021

LCMS Northern Illinois District
Congregational Support
YTD January 31, 2021 & 2020

REVISED CIRCUIT GROUPINGS EFFECTIVE JUNE 1, 2018

Other support consists of NSNB, District missions, gifts, & Synod

			2020 Fiscal Year-to-Date Through January 31, 2021				
CIRCUIT	Congregation Name	City	# Comm Members *	Unrestricted	Other	Total Support	Per Comm Member
1	Beautiful Savior Lutheran Church	Antioch	72	\$9,417.00	\$0.00	\$9,417.00	\$130.79
1	Bethel Lutheran Church	Gurnee	372	\$13,000.00	\$0.00	\$13,000.00	\$34.95
1	Community of Faith Lutheran Church	Spring Grove	61	\$0.00	\$0.00	\$0.00	\$0.00
1	Good Shepherd Lutheran Church	Lake Villa	55	\$400.00	\$0.00	\$400.00	\$7.27
1	Grace Lutheran Church	Northbrook	101	\$0.00	\$2,000.00	\$2,000.00	\$19.80
1	Immanuel Lutheran Church	Glenview	180	\$0.00	\$13,200.00	\$13,200.00	\$73.33
1	Lord of Glory Lutheran Church	Grayslake	566	\$5,000.00	\$1,250.00	\$6,250.00	\$11.04
1	North Shore/Faith Lutheran Church	Lake Forest	347	\$13,000.00	\$0.00	\$13,000.00	\$37.46
1	Prince of Peace Lutheran Church	Waukegan	136	\$100.00	\$0.00	\$100.00	\$0.74
1	Redeemer Lutheran Church	Waukegan	126	\$3,500.00	\$0.00	\$3,500.00	\$27.78
1	Saint Matthew Lutheran Church	Hawthorn Woods	1,213	\$7,500.00	\$0.00	\$7,500.00	\$6.18
1 Total			3,229	\$51,917.00	\$16,450.00	\$68,367.00	\$21.17
2	Calvary Lutheran Church	Wood Dale	57	\$2,000.00	\$0.00	\$2,000.00	\$35.09
2	Good Shepherd Lutheran Church	Des Plaines	90	\$1,000.00	\$0.00	\$1,000.00	\$11.11
2	Immanuel Lutheran Church	Des Plaines	166	\$15,133.33	\$0.00	\$15,133.33	\$91.16
2	Immanuel Lutheran Church	Palatine	1,274	\$5,962.00	\$0.00	\$5,962.00	\$4.68
2	Living Christ Lutheran Church	Arlington Heights	115	\$8,000.00	\$0.00	\$8,000.00	\$69.57
2	Our Redeemer Lutheran Church	Prospect Heights	106	\$1,650.00	\$0.00	\$1,650.00	\$15.57
2	Prince of Peace Lutheran Church	Palatine	969	\$43,000.00	\$0.00	\$43,000.00	\$44.38
2	Saint Andrews Lutheran Church	Park Ridge	492	\$10,681.32	\$0.00	\$10,681.32	\$21.71
2	Saint John Lutheran Church	Mount Prospect	254	\$580.00	\$0.00	\$580.00	\$2.28
2	Saint Luke Lutheran Church	Itasca	508	\$5,002.00	\$0.00	\$5,002.00	\$9.85
2	Saint Paul Lutheran Church	Mount Prospect	1,491	\$50,000.00	\$0.00	\$50,000.00	\$33.53
2 Total			5,522	\$143,008.65	\$0.00	\$143,008.65	\$25.90
3	Bethlehem Lutheran Church	West Dundee	257	\$8,000.00	\$0.00	\$8,000.00	\$31.13
3	Calvary Lutheran Church	Elgin	248	\$0.00	\$3,200.00	\$3,200.00	\$12.90
3	Faith Lutheran Church	Carpentersville	44	\$260.00	\$0.00	\$260.00	\$5.91
3	Good Shepherd Lutheran Church	Elgin	1,013	\$12,000.00	\$0.00	\$12,000.00	\$11.85
3	Immanuel Lutheran Church	East Dundee	1,692	\$55,079.39	\$0.00	\$55,079.39	\$32.55
3	King of Glory Lutheran Church	Elgin	150	\$12,866.26	\$0.00	\$12,866.26	\$85.78
3	Saint John's Lutheran Church	Elgin	959	\$5,200.00	\$0.00	\$5,200.00	\$5.42
3	Saint Matthew Lutheran Church	Barrington	302	\$30,175.00	\$0.00	\$30,175.00	\$99.92
3	Saint Peter Lutheran Church	Dundee	450	\$5,500.00	\$0.00	\$5,500.00	\$12.22
3	Vida y Fe/Life & Faith Evangelical Lutheran Church	West Dundee	-	\$0.00	\$0.00	\$0.00	\$0.00
3 Total			5,115	\$129,080.65	\$3,200.00	\$132,280.65	\$25.86
4	Fellowship of Faith Lutheran Church	McHenry	207	\$12,361.00	\$0.00	\$12,361.00	\$59.71
4	Holy Cross Lutheran Church	Cary	365	\$335.00	\$7,819.00	\$8,154.00	\$22.34
4	Immanuel Lutheran Church	Crystal Lake	1,248	\$25,597.64	\$0.00	\$25,597.64	\$20.51
4	Prince of Peace Lutheran Church	Crystal Lake	271	\$1,000.00	\$0.00	\$1,000.00	\$3.69
4	Saint John Lutheran Church	Island Lake	128	\$1,300.00	\$0.00	\$1,300.00	\$10.16
4	Saint John's Lutheran Church	Algonquin	436	\$3,400.00	\$0.00	\$3,400.00	\$7.80
4	Saint John's Lutheran Church	Woodstock	408	\$2,554.90	\$67.50	\$2,622.40	\$6.43
4	Saint Paul Lutheran Church	Harvard	150	\$4,699.00	\$0.00	\$4,699.00	\$31.33
4	Trinity Lutheran Church	Huntley	256	\$7,440.62	\$0.00	\$7,440.62	\$29.06
4	Zion Lutheran Church	McHenry	471	\$5,084.59	\$0.00	\$5,084.59	\$10.80
4 Total			3,940	\$63,772.75	\$7,886.50	\$71,659.25	\$18.19
5	Family in Faith Lutheran Church	Glendale Heights	70	\$3,288.30	\$0.00	\$3,288.30	\$46.98
5	Grace Lutheran Church	Streamwood	237	\$3,000.00	\$0.00	\$3,000.00	\$12.66
5	Immanuel Lutheran Church	Bartlett	55	\$2,000.00	\$0.00	\$2,000.00	\$36.36
5	Our Savior Lutheran Church	Carol Stream	323	\$24,292.25	\$0.00	\$24,292.25	\$75.21
5	Saint John Lutheran Church	Schaumburg	110	\$0.00	\$0.00	\$0.00	\$0.00

LCMS Northern Illinois District
Congregational Support
YTD January 31, 2021 & 2020

REVISED CIRCUIT GROUPINGS EFFECTIVE JUNE 1, 2018

Other support consists of NSNB, District missions, gifts, & Synod

		2020 Fiscal Year-to-Date Through January 31, 2021				
CIRCUIT	Congregation Name	City	# Comm Members *	Unrestricted	Other	Per Comm Member
	5 Saint Paul Lutheran Church	Addison	252	\$6,479.11	\$0.00	\$25.71
	5 Saint Peter Lutheran Church	Arlington Heights	1,473	\$58,166.65	\$0.00	\$39.49
	5 Saint Peter Lutheran Church	Schaumburg	1,360	\$20,000.00	\$0.00	\$14.71
	5 Trinity Lutheran Church	Roselle	3,195	\$0.00	\$46,200.00	\$14.46
5 Total			7,075	\$117,226.31	\$46,200.00	\$23.10
	6 Bethel Lutheran Church	Westmont	251	\$26,281.61	\$0.00	\$104.71
	6 Christ Our Savior Lutheran Church	Winfield	70	\$0.00	\$505.00	\$7.21
	6 Immanuel Lutheran Church	Downers Grove	1,173	\$43,533.57	\$0.00	\$37.11
	6 Immanuel Lutheran Church	Elmhurst	687	\$20,992.53	\$0.00	\$30.56
	6 Peace Lutheran Church	Lombard	610	\$16,880.00	\$0.00	\$27.67
	6 Saint John Lutheran Church	Wheaton	761	\$5,000.00	\$0.00	\$6.57
	6 Saint John's Lutheran Church	Lombard	1,164	\$20,002.00	\$0.00	\$17.18
	6 Trinity Lutheran Church	Lombard	249	\$0.00	\$0.00	\$0.00
	6 Trinity Lutheran Church	West Chicago	118	\$3,000.00	\$0.00	\$25.42
	6 Zion Lutheran Church	Hinsdale	347	\$12,546.65	\$0.00	\$36.16
6 Total			5,430	\$148,236.36	\$505.00	\$27.39
	7 Cross Lutheran Church	Yorkville	756	\$0.00	\$109,187.19	\$144.43
	7 Emmanuel Lutheran Church	Aurora	110	\$3,516.00	\$0.00	\$31.96
	7 Faith Lutheran Church	Geneva	42	\$0.00	\$0.00	\$0.00
	7 Friends in Christ Lutheran Church	Morris	141	\$4,000.00	\$0.00	\$28.37
	7 Hope Lutheran Church	Aurora	37	\$0.00	\$0.00	\$0.00
	7 Iglesia Evangelica Luterana San Pablo	Aurora	169	\$0.00	\$0.00	\$0.00
	7 Immanuel Lutheran Church	Batavia	1,822	\$86,024.98	\$0.00	\$47.21
	7 Lord of Life Lutheran Church	LaFox	350	\$2,600.00	\$3,400.00	\$17.14
	7 New Song Lutheran Church	Aurora	110	\$0.00	\$0.00	\$0.00
	7 Saint Luke's Lutheran Church	Montgomery	385	\$0.00	\$0.00	\$0.00
	7 Saint Mark's Lutheran Church	Saint Charles	818	\$12,000.00	\$0.00	\$14.67
	7 Saint Paul Lutheran Church	Aurora	701	\$0.00	\$0.00	\$0.00
	7 Zion Lutheran Church	Naperville	216	\$0.00	\$0.00	\$0.00
7 Total			5,657	\$108,140.98	\$112,587.19	\$39.02
	8 Immanuel Lutheran Church	DeKalb	348	\$2,399.94	\$0.00	\$6.90
	8 Immanuel Lutheran Church	Hinckley	220	\$11,700.00	\$0.00	\$53.18
	8 Saint John Lutheran Church	Burlington	307	\$0.00	\$0.00	\$0.00
	8 Saint John Lutheran Church	Sycamore	552	\$10,795.86	\$0.00	\$19.56
	8 Saint John's Lutheran Church	Union	645	\$27,825.00	\$0.00	\$43.14
	8 Saint Peter's Lutheran Church (North Plato)	Hampshire	124	\$2,500.00	\$0.00	\$20.16
	8 Trinity Lutheran Church	Genoa	533	\$10,500.00	\$0.00	\$19.70
	8 Trinity Lutheran Church	Hampshire	100	\$0.00	\$0.00	\$0.00
	8 Zion Lutheran Church	Marengo	1,414	\$15,000.00	\$0.00	\$10.61
8 Total			4,243	\$80,720.80	\$0.00	\$19.02
	9 Christ Our Savior Lutheran Church	Roscoe	60	\$600.00	\$0.00	\$10.00
	9 Christ the Rock Lutheran Church	Rockford	283	\$35,189.02	\$0.00	\$124.34
	9 Concordia Lutheran Church	Machesney Park	181	\$1,000.00	\$0.00	\$5.52
	9 Immanuel Lutheran Church	Belvidere	1,649	\$16,458.33	\$0.00	\$9.98
	9 Immanuel Lutheran Church	Lindenwood	67	\$7,400.00	\$0.00	\$110.45
	9 Mount Olive Lutheran Church	Rockford	447	\$25,000.00	\$0.00	\$55.93
	9 Redeemer Lutheran Church	Rockford	336	\$15,000.00	\$0.00	\$44.64
	9 Resurrection Lutheran Church	Rockford	-	\$1,500.00	\$0.00	\$0.00
	9 Rockford Lutheran Church for the Deaf	Rockford	12	\$0.00	\$0.00	\$0.00
	9 Saint Andrew Lutheran Church	Rockton	377	\$12,246.25	\$0.00	\$32.48
	9 Saint John Lutheran Church	Pecatonica	220	\$11,525.00	\$0.00	\$52.39

LCMS Northern Illinois District
Congregational Support
YTD January 31, 2021 & 2020

REVISED CIRCUIT GROUPINGS EFFECTIVE JUNE 1, 2018

Other support consists of NSNB, District missions, gifts, & Synod

		2020 Fiscal Year-to-Date Through January 31, 2021				
CIRCUIT	Congregation Name	City	# Comm Members *	Unrestricted	Other	Per Comm Member
	9 Saint Paul Lutheran Church	Rockford	217	\$0.00	\$0.00	\$0.00
9 Total			3,849	\$125,918.60	\$0.00	\$125,918.60
	10 Christ Our Savior Lutheran Church	Dixon	83	\$7,668.08	\$0.00	\$92.39
	10 Good Shepherd Lutheran Church	Rock Falls	339	\$3,300.00	\$3,545.29	\$20.19
	10 Holy Trinity Lutheran Church	Walnut	55	\$0.00	\$1,200.00	\$21.82
	10 Immanuel Lutheran Church	Freeport	561	\$25,396.59	\$0.00	\$45.27
	10 Messiah Lutheran Church	Sterling	250	\$2,500.00	\$0.00	\$10.00
	10 Our Redeemer Lutheran Church	Freeport	133	\$2,900.02	\$0.00	\$21.80
	10 Our Savior Lutheran Church	Sterling	47	\$2,500.00	\$0.00	\$53.19
	10 Saint John's Lutheran Church	Lena	552	\$24,600.00	\$0.00	\$44.57
	10 Saint Paul Lutheran Church	Elizabeth	165	\$6,000.00	\$0.00	\$36.36
	10 Saint Paul Lutheran Church	Rochelle	497	\$6,124.63	\$0.00	\$12.32
	10 Saint Peters Lutheran Church	Morrison	323	\$15,750.00	\$0.00	\$48.76
10 Total			3,005	\$96,739.32	\$4,745.29	\$101,484.61
	11 Ascension Lutheran Church	Niles	103	\$0.00	\$0.00	\$0.00
	11 Bethlehem Lutheran Church	Evanston	100	\$5,011.00	\$0.00	\$50.11
	11 Concordia Lutheran Church	Chicago	27	\$0.00	\$0.00	\$0.00
	11 Jehovah El Buen Pastor	Chicago	58	\$230.00	\$8,197.00	\$145.29
	11 Messiah Lutheran Church	Chicago	78	\$0.00	\$0.00	\$0.00
	11 Our Saviour Lutheran Church	Chicago	71	\$0.00	\$0.00	\$0.00
	11 Saint John's Lutheran Church	Chicago	482	\$2,518.50	\$433.00	\$6.12
	11 Saint Paul Lutheran Church	Skokie	241	\$15,695.04	\$0.00	\$65.12
	11 Saint Paul Lutheran Church (Norwood Park)	Chicago	357	\$0.00	\$300.00	\$0.84
	11 Saint Philip Lutheran Church (N)	Chicago	200	\$0.00	\$0.00	\$0.00
	11 Tabor Lutheran Church	Chicago	27	\$0.00	\$2,700.00	\$100.00
	11 Trinity Lutheran Church (N)	Chicago	41	\$0.00	\$0.00	\$0.00
11 Total			1,785	\$23,454.54	\$11,630.00	\$35,084.54
	12 Apostles Lutheran Church	Melrose Park	110	\$1,200.00	\$0.00	\$10.91
	12 Bethlehem Lutheran Church	River Grove	171	\$0.00	\$0.00	\$0.00
	12 Faith Lutheran Church	Cicero	46	\$0.00	\$0.00	\$0.00
	12 Faith Lutheran Church	Westchester	-	\$0.00	\$0.00	\$0.00
	12 Good Shepherd Our Redeemer Lutheran Church	Berwyn	71	\$1,000.00	\$390.00	\$19.58
	12 Hope Lutheran Church	Hillside	108	\$900.00	\$0.00	\$8.33
	12 Immanuel Lutheran Church	Hillside	213	\$1,395.00	\$0.00	\$6.55
	12 Mount Calvary Lutheran Church	Franklin Park	33	\$200.00	\$0.00	\$6.06
	12 Saint John Lutheran Church	Forest Park	276	\$19,420.95	\$0.00	\$70.37
	12 Saint John's Lutheran Church	La Grange	801	\$15,980.83	\$0.00	\$19.95
	12 Saint Paul Lutheran Church	Brookfield	267	\$0.00	\$0.00	\$0.00
	12 Saint Paul Lutheran Church	Brookfield	267	\$0.00	\$0.00	\$0.00
	12 Saint Paul Lutheran Church (Austin)	Chicago	151	\$0.00	\$0.00	\$0.00
	12 Zion Lutheran Church	Bensenville	322	\$0.00	\$0.00	\$0.00
12 Total			2,786	\$46,096.78	\$390.00	\$46,486.78
	13 Faith Lutheran Church	Oak Lawn	125	\$2,000.00	\$150.00	\$17.20
	13 Gloria Dei Lutheran Church	Chicago	167	\$0.00	\$0.00	\$0.00
	13 Grace Lutheran Church	Western Springs	146	\$3,500.00	\$0.00	\$23.97
	13 Grace Lutheran Church	Willow Springs	98	\$0.00	\$0.00	\$0.00
	13 Holy Cross Lutheran Church	Chicago	95	\$0.00	\$0.00	\$0.00
	13 Holy Trinity Lutheran Church	Burbank	110	\$0.00	\$0.00	\$0.00
	13 Hope Lutheran Church	Countryside	52	\$1,000.00	\$500.00	\$28.85
	13 Immanuel Lutheran Church	Hodgkins	82	\$1,725.00	\$2,740.00	\$54.45
	13 Mount Greenwood Lutheran Church	Chicago	48	\$119.20	\$0.00	\$2.48

LCMS Northern Illinois District
Congregational Support
YTD January 31, 2021 & 2020

REVISED CIRCUIT GROUPINGS EFFECTIVE JUNE 1, 2018

Other support consists of NSNB, District missions, gifts, & Synod

		2020 Fiscal Year-to-Date Through January 31, 2021				
CIRCUIT	Congregation Name	City	# Comm Members *	Unrestricted	Other	Per Comm Member
	13 Saint Paul Lutheran Church	Oak Lawn	338	\$10,000.00	\$0.00	\$29.59
	13 Saint Peter Lutheran Church	Chicago	63	\$642.00	\$0.00	\$10.19
	13 Zion Lutheran Church	Lyons	77	\$315.00	\$0.00	\$4.09
	13 Zion Lutheran Church	Oak Lawn	158	\$0.00	\$0.00	\$0.00
	13 Zion Lutheran Church	Summit	115	\$0.00	\$0.00	\$0.00
13 Total			1,674	\$19,301.20	\$3,390.00	\$13.56
	14 Christ the King Lutheran Church	Chicago	65	\$0.00	\$0.00	\$0.00
	14 First Bethlehem Lutheran Church	Chicago	53	\$1,200.00	\$0.00	\$22.64
	14 First Saint Paul's Lutheran Church	Chicago	210	\$6,800.00	\$0.00	\$32.38
	14 Good Shepherd Lutheran Church	South Holland	231	\$2,500.00	\$0.00	\$10.82
	14 Grace Lutheran Church	Chicago	115	\$0.00	\$0.00	\$0.00
	14 Mount Calvary Lutheran Church	Calumet Park	50	\$1,500.00	\$0.00	\$30.00
	14 Resurrection Lutheran Church	Chicago	160	\$1,200.00	\$0.00	\$7.50
	14 Saint James Lutheran Church	Chicago	677	\$5,000.04	\$0.00	\$7.39
	14 Saint Matthew Lutheran Church	Chicago	58	\$0.00	\$0.00	\$0.00
	14 Saint Paul Lutheran Church (S)	Chicago	96	\$0.00	\$0.00	\$0.00
	14 Saint Philip Lutheran Church (S)	Chicago	72	\$0.00	\$0.00	\$0.00
	14 Saint Stephen Lutheran Church	Chicago	30	\$0.00	\$0.00	\$0.00
	14 Salem Lutheran Church	Blue Island	109	\$1,000.00	\$0.00	\$9.17
	14 Zion Lutheran Church	Chicago	91	\$0.00	\$0.00	\$0.00
14 Total			2,017	\$19,200.04	\$0.00	\$9.52
	15 Bethany Lutheran Church	Naperville	762	\$15,965.00	\$0.00	\$20.95
	15 Divine Shepherd Lutheran Church	Bolingbrook	170	\$0.00	\$0.00	\$0.00
	15 Peace Lutheran Church	Plainfield	211	\$6,000.00	\$0.00	\$28.44
	15 Saint John Lutheran Church	Darien	294	\$5,600.00	\$0.00	\$19.05
	15 Saint Matthew Lutheran Church	Lemont	352	\$0.00	\$0.00	\$0.00
	15 Trinity Lutheran Church	Burr Ridge	638	\$14,500.00	\$0.00	\$22.73
	15 Trinity Lutheran Church	Lisle	1,027	\$0.00	\$39,999.99	\$38.95
	15 Word of Life Lutheran Church	Naperville	103	\$1,613.08	\$0.00	\$15.66
15 Total			3,557	\$43,678.08	\$39,999.99	\$23.52
	16 Christ Lutheran Church	Orland Park	1,570	\$23,040.00	\$0.00	\$14.68
	16 Good Shepherd Lutheran Church	Frankfort	344	\$5,000.00	\$0.00	\$14.53
	16 Immanuel Lutheran Church	Mokena	517	\$12,000.00	\$0.00	\$23.21
	16 Immanuel Lutheran Church	Richton Park	77	\$0.00	\$1,807.10	\$23.47
	16 Living Word Lutheran Church	Orland Park	158	\$0.00	\$0.00	\$0.00
	16 Saint John's Lutheran Church	Country Club Hills	203	\$500.00	\$0.00	\$2.46
	16 Saint Paul Lutheran Church	Matteson	535	\$15,035.70	\$0.00	\$28.10
	16 Salem Lutheran Church	Homewood	420	\$4,500.00	\$2,950.00	\$17.74
	16 Trinity Lutheran Church	Tinley Park	1,150	\$10,583.32	\$0.00	\$9.20
16 Total			4,974	\$70,659.02	\$4,757.10	\$15.16
	17 Hope Lutheran Church	Shorewood	479	\$0.00	\$0.00	\$0.00
	17 Living Heritage Lutheran Church	Plano	37	\$500.00	\$0.00	\$13.51
	17 Lord of Life Lutheran Church (Millbrook)	Serena	37	\$1,200.00	\$0.00	\$32.43
	17 Our Savior Lutheran Church	Joliet	694	\$11,177.89	\$0.00	\$16.11
	17 River of Life Lutheran Church	Channahon	93	\$0.00	\$0.00	\$0.00
	17 Saint Paul's Lutheran Church	Lockport	159	\$1,000.00	\$0.00	\$6.29
	17 Saint Peter Lutheran Church	Joliet	318	\$6,314.09	\$0.00	\$19.86
	17 Trinity Lutheran Church	Marseilles	61	\$0.00	\$0.00	\$0.00
	17 Zion Lutheran Church	Ottawa	180	\$2,499.96	\$1,851.70	\$24.18
17 Total			2,058	\$22,691.94	\$1,851.70	\$11.93

LCMS Northern Illinois District
 Congregational Support
 YTD January 31, 2021 & 2020

REVISED CIRCUIT GROUPINGS EFFECTIVE JUNE 1, 2018

Other support consists of NSNB, District missions, gifts, & Synod

			2020 Fiscal Year-to-Date Through January 31, 2021				
CIRCUIT	Congregation Name	City	# Comm Members *	Unrestricted	Other	Total Support	Per Comm Member
	18 Emmanuel Lutheran Church	Dwight	162	\$0.00	\$200.00	\$200.00	\$1.23
	18 Good Shepherd Lutheran Church	Bourbonnais	50	\$300.00	\$0.00	\$300.00	\$6.00
	18 Our Savior Lutheran Church	Momence	113	\$500.00	\$0.00	\$500.00	\$4.42
	18 Risen Savior Lutheran Church	Manteno	140	\$11,110.23	\$0.00	\$11,110.23	\$79.36
	18 Saint Paul's Lutheran Church	Bourbonnais	1,352	\$18,750.00	\$0.00	\$18,750.00	\$13.87
	18 Trinity Lutheran Church	Dwight	74	\$500.00	\$0.00	\$500.00	\$6.76
	18 Trinity Lutheran Church	Herscher	394	\$16,215.93	\$0.00	\$16,215.93	\$41.16
	18 Zion Lutheran Church	Bonfield	95	\$9,628.17	\$0.00	\$9,628.17	\$101.35
	18 Zion Lutheran Church	Chebanse	442	\$3,900.00	\$0.00	\$3,900.00	\$8.82
	18 Zion Lutheran Church	Grant Park	343	\$12,000.00	\$0.00	\$12,000.00	\$34.99
18 Total			3,165	\$72,904.33	\$200.00	\$73,104.33	\$23.10
	19 Immanuel Lutheran Church	Steger	125	\$0.00	\$0.00	\$0.00	\$0.00
	19 Saint John Lutheran Church	Beecher	259	\$2,973.75	\$2,973.75	\$5,947.50	\$22.96
	19 Saint John's Lutheran Church	Lansing	214	\$100.00	\$0.00	\$100.00	\$0.47
	19 Saint Paul Lutheran Church	Beecher	166	\$1,708.00	\$0.00	\$1,708.00	\$10.29
	19 Saint Paul Lutheran Church	Thornton	225	\$2,621.00	\$300.00	\$2,921.00	\$12.98
	19 Saint Paul's Lutheran Church	Chicago Heights	336	\$329.27	\$0.00	\$329.27	\$0.98
	19 Trinity Lutheran Church	Lansing	281	\$7,583.00	\$0.00	\$7,583.00	\$26.99
	19 Zion Lutheran Church	Beecher	647	\$3,600.00	\$0.00	\$3,600.00	\$5.56
19 Total			2,253	\$18,915.02	\$3,273.75	\$22,188.77	\$9.85
Total 204 Congregations			71,334	\$1,401,662.37	\$257,066.52	\$1,658,728.89	\$23.25
<i>Closed congregations and inactives & other adjustments</i>				\$200.00		\$200.00	\$0.01
Grand Total			71,334	\$1,401,862.37	\$257,066.52	\$1,658,928.89	\$23.26

**2022 Convention Report:
Rev. John Prohl, Assistant to the President**

It has been a genuine honor to serve God's church these past three years as an assistant to President Buss. My years of parish and hospital chaplaincy experience have helped prepare me for the wide variety of challenges and opportunities inherent in a district with 200+ congregations.

My primary responsibility in the District has been to serve as a reconciler with churches and ministries where disagreement and conflict have damaged their mission. Conflict affects every aspect of our lives and the church is no exception. In fact churches are particularly vulnerable because Satan likes nothing better than to turn discussion into disagreement and disagreement into anger and distrust and division.

But what might appear as Satan's triumph can also be God's opportunity. In John 17:23 Jesus prays that the disciples of every generation would be brought to complete unity so that the world would know that He, Jesus, was sent by the Father and loved by the Father. In other words, the world is watching and when we resolve our church conflicts in a God-pleasing manner then God himself is revealed and glorified.

The "tools" I use in reconciliation include some of societies "tools" but go far beyond those. Law and Gospel is integral and Confession and Absolution are foundational. Conflict resolution does not always result in everyone being happy or satisfied, but when the God-given blessings of confession and forgiveness are used then hearts are healed and God is honored.

Thanks be to God that much goes on in our District's churches, schools, and ministries that does not involve conflict. President Buss has asked me to serve in a number of additional roles beside conflict resolution. Among them are:

- 1) Representing the District at anniversary celebrations, at church worker retirements, and at funerals.
- 2) Walking alongside some congregations during their vacancy/call process.
- 3) Working with congregations considering whether it was time to end their ministry. Those congregations needed and were given the opportunity to grieve their loss and to remember their history of Gospel proclamation. Some were also able to celebrate that their remaining financial blessings would continue to serve Christ's church through new mission opportunities elsewhere.
- 4) Consulting with congregations who were and are considering how they can best continue their ministries through partnership arrangements with neighboring churches and pastors.

In all of the above my experience certainly helps, but it is God's daily grace and the strength of the Holy Spirit that equips me to serve. To Him be the glory.

May (they) be brought to complete unity. Then the world will know that you sent me and have loved them even as you have loved me.
John 17:23 NIV



2022 Convention Report: Rev. Dr. Thomas Johnson, Ethnic Ministry Development

It is a privilege and a joy to serve the churches and church workers of the Northern Illinois District in ethnic ministry development. Beginning in August of 2019, I have served part-time partnering with President Buss and District staff in our outreach to souls *“from every nation, from all tribes and peoples and languages”* (Rev. 7:9) whom God has brought to Northern Illinois.

This has provided a unique opportunity for me to meet with pastors, church workers, church leaders, and community leaders to encourage and equip one another in our witness and proclamation of the Word in our richly diverse communities. We have also hosted various in person and Zoom meetings with guest speakers from all over North America. We have several ethnic ministry gatherings coming up:

January 15, 2022 via Zoom with Rev. Steve Schave, Executive Director at Lutheran Association of Missionaries and Pilots (LAMP) and formerly as Director of LCMS Urban & Inner-City Mission.

May 21, 2022 in person gathering with Rev. Tom Eggebrecht who will help us explore ways and develop an action plan for furthering Christ’s Kingdom through us.

It is exciting to know that the ministry of the Word in our District already goes out in English, German, American Sign Language (ASL), Spanish, Lithuanian, Telugu, Amharic, Oromo, Arabic, Farsi, Urdu, Korean, Chinese, French, and likely other languages and dialects about which we do not yet know.

The wellness of our ethnic church workers and congregations in body, mind, and spirit is a priority. Our District staff and guest speakers have brought encouragement, resources, and concrete things that we can do so that we do not just survive but thrive in these difficult days.

In many ways, our witness has remained unhindered by the pandemic. There are many examples, for instance, of how our Spanish and Lithuanian speaking pastors and congregations have used technology to reach their own people and beyond. Our English-only speaking congregations have learned and benefited. Together we can find new ways to bring the Good News of Jesus Christ to make disciples of all the ethnic groups God has brought together in our region, including our northern European ethnic groups! It is a gift to be able to see ourselves individually and collectively as the beautifully diverse Body of Christ that we are together. There are many challenges but also many exciting opportunities that God has in store for us.



A Bit of History

In the summer of 2019, the LCMS Northern Illinois District created a Wellness Team to serve the District in creating ways to help our professional church workers in their wellness. This team consisted of one college professor/DCE, one parish DCE, one pastor, two lay persons, and one retired pastor's wife. One of the first primary goals of this group was to create a church worker care team with the specific purpose of providing support, prayer, and encouragement for individual professional church workers in the NID. This group formally began in November 2020.

Care Team Members



Dr. Debbie Arfsten,
Director



Rev. Brian Davies



Rev. Mike Gudgel



DCE Dari Hartmann



Rev. Caleb Schauer

Care team members are contacted directly by individuals who are seeking support and encouragement and confidentiality is assured. Each care team member reports to the director monthly as to the number of contacts made and general topics of discussion but no names are shared with the director or with any District staff member. The relationship between the care team member and individual is intended to be short-term – typically between one to six contacts. Topics of discussion range from vocational uncertainty to stress management to church leadership issues and more. The care team does not provide professional counseling but may offer resources or recommendations for such.

In addition to individual meetings, care team members have served at the 2021 regional pastor's conferences to be available to those in attendance, and future plans include adding a presence at educators conferences and other opportunities where church workers may gather. Also, when feasible in the future, there is a hope to offer the care team services to church worker spouses and retired church workers.

For the Wellness Team, future discussions will be centered on creating ways to help train the leadership in our congregations in how they can care for their workers in focusing on their overall wellness.

